



[TABLE OF CONTENTS](#)

[HOW & WHERE TO BUY](#)

[EQUIPMENT FINANCING](#)



CONTACT SUMMIT TRACTORS

CALL OR TEXT 770-209-3390

Email: support@summittractors.com

SUMMITTRACTORS.COM

**INTERACTIVE
BUYERS GUIDE**

Table of Contents

SECTION	PAGE(S)	SECTION	PAGE(S)
ABOUT THIS INTERACTIVE GUIDE.....	3	<ul style="list-style-type: none"><u>LX85 LOADER STANDARD FEATURES & GENERAL DESCRIPTION.....</u>	33
SUMMIT TX25H TRACTOR & LX85 FRONT-END LOADER		<ul style="list-style-type: none"><u>3RD FUNCTION HYDRAULICS DIVERTER VALVE.....</u>	34
<ul style="list-style-type: none"><u>GENERAL DESCRIPTION.....</u>	4	<ul style="list-style-type: none"><u>BUCKET LEVEL INDICATOR.....</u>	35
<ul style="list-style-type: none"><u>TX25H TRACTOR STANDARD FEATURES - LEFT SIDE.....</u>	5	<ul style="list-style-type: none"><u>DUAL HYDRAULIC BUCKET CYLINDERS.....</u>	36
<ul style="list-style-type: none"><u>TX25H TRACTOR STANDARD FEATURES - RIGHT SIDE.....</u>	6	<ul style="list-style-type: none"><u>FENDER MOUNTED INTEGRATED JOYSTICK.....</u>	37
<ul style="list-style-type: none"><u>TX25H TRACTOR STANDARD FEATURES - FRONT & BACK VIEW.....</u>	7	<ul style="list-style-type: none"><u>LOADER FLOAT POSITION.....</u>	38
<ul style="list-style-type: none"><u>TX25H TRACTOR STANDARD FEATURES - CONTROLS, CONSOLE & ENGINE.....</u>	8	<ul style="list-style-type: none"><u>LOADER LOWERING SPEED CONTROL.....</u>	39
<ul style="list-style-type: none"><u>MITSUBISHI ENGINE.....</u>	9	<ul style="list-style-type: none"><u>QUICK-ATTACH LOADER.....</u>	40
<ul style="list-style-type: none"><u>HYDROSTATIC TRANSMISSION.....</u>	10	<ul style="list-style-type: none"><u>SELF-LEVELING LOADER.....</u>	41
<ul style="list-style-type: none"><u>REAR HYDRAULIC REMOTES.....</u>	11	<ul style="list-style-type: none"><u>SKID-STEER QUICK ATTACH SYSTEM.....</u>	42
<ul style="list-style-type: none"><u>GOODYEAR R14T TIRES.....</u>	12		
<ul style="list-style-type: none"><u>RIMGUARD LIQUID TIRE BALLAST.....</u>	13	SUMMIT BHX76 BACKHOE	
<ul style="list-style-type: none"><u>HYDRAULIC STEERING.....</u>	14	<ul style="list-style-type: none"><u>BHX76 BACKHOE STANDARD FEATURES & DESCRIPTION.....</u>	43
<ul style="list-style-type: none"><u>MECHANICAL 4WD.....</u>	15	<ul style="list-style-type: none"><u>INDEPENDENT OPERATOR SEAT.....</u>	44
<ul style="list-style-type: none"><u>PREMIUM SUSPENSION SEAT WITH BACKREST EXTENSION.....</u>	16	<ul style="list-style-type: none"><u>MECHANICAL THUMB.....</u>	45
<ul style="list-style-type: none"><u>CROSS DRAWBAR.....</u>	17	<ul style="list-style-type: none"><u>SAE CONTROLS.....</u>	46
<ul style="list-style-type: none"><u>FOLDING ROLLOVER PROTECTION STRUCTURE.....</u>	18	<ul style="list-style-type: none"><u>LOCKING PIN STORAGE SLOTS.....</u>	47
<ul style="list-style-type: none"><u>FRONT TOW HOOK.....</u>	19	<ul style="list-style-type: none"><u>OPERATOR ASSIST STEP.....</u>	48
<ul style="list-style-type: none"><u>POWER TAKE OFF-PTO.....</u>	20	<ul style="list-style-type: none"><u>SMV SIGN.....</u>	49
<ul style="list-style-type: none"><u>PROJECTOR HEADLIGHTS.....</u>	21	<ul style="list-style-type: none"><u>STANDARD BUCKET.....</u>	50
<ul style="list-style-type: none"><u>REAR WORKLIGHT.....</u>	22	BACKHOE OPTIONS	
<ul style="list-style-type: none"><u>SIDE VIEW MIRRORS.....</u>	23	<ul style="list-style-type: none"><u>OPTIONAL BUCKETS.....</u>	51
<ul style="list-style-type: none"><u>SWINGING DRAWBAR.....</u>	24	<ul style="list-style-type: none"><u>OPTIONAL STREET PADS.....</u>	52
<ul style="list-style-type: none"><u>TOOLBOX.....</u>	25		
<ul style="list-style-type: none"><u>TRACTOR WEIGHT BENEFITS.....</u>	26		
<ul style="list-style-type: none"><u>3-POINT TRANSPORT LOCK.....</u>	27		
<ul style="list-style-type: none"><u>7-PIN TRAILER SOCKET.....</u>	28		
<ul style="list-style-type: none"><u>12V USB CONNECTOR.....</u>	29		
<ul style="list-style-type: none"><u>DIFFERENTIAL LOCK.....</u>	30		
<ul style="list-style-type: none"><u>ENTRY-EXIT GRAB RAILS.....</u>	31		
<ul style="list-style-type: none"><u>ENTRY-EXIT STEPS.....</u>	32		

<ul style="list-style-type: none"><u>LX85 LOADER STANDARD FEATURES & GENERAL DESCRIPTION.....</u>	33
<ul style="list-style-type: none"><u>3RD FUNCTION HYDRAULICS DIVERTER VALVE.....</u>	34
<ul style="list-style-type: none"><u>BUCKET LEVEL INDICATOR.....</u>	35
<ul style="list-style-type: none"><u>DUAL HYDRAULIC BUCKET CYLINDERS.....</u>	36
<ul style="list-style-type: none"><u>FENDER MOUNTED INTEGRATED JOYSTICK.....</u>	37
<ul style="list-style-type: none"><u>LOADER FLOAT POSITION.....</u>	38
<ul style="list-style-type: none"><u>LOADER LOWERING SPEED CONTROL.....</u>	39
<ul style="list-style-type: none"><u>QUICK-ATTACH LOADER.....</u>	40
<ul style="list-style-type: none"><u>SELF-LEVELING LOADER.....</u>	41
<ul style="list-style-type: none"><u>SKID-STEER QUICK ATTACH SYSTEM.....</u>	42

SUMMIT BHX76 BACKHOE	
<ul style="list-style-type: none"><u>BHX76 BACKHOE STANDARD FEATURES & DESCRIPTION.....</u>	43
<ul style="list-style-type: none"><u>INDEPENDENT OPERATOR SEAT.....</u>	44
<ul style="list-style-type: none"><u>MECHANICAL THUMB.....</u>	45
<ul style="list-style-type: none"><u>SAE CONTROLS.....</u>	46
<ul style="list-style-type: none"><u>LOCKING PIN STORAGE SLOTS.....</u>	47
<ul style="list-style-type: none"><u>OPERATOR ASSIST STEP.....</u>	48
<ul style="list-style-type: none"><u>SMV SIGN.....</u>	49
<ul style="list-style-type: none"><u>STANDARD BUCKET.....</u>	50
BACKHOE OPTIONS	
<ul style="list-style-type: none"><u>OPTIONAL BUCKETS.....</u>	51
<ul style="list-style-type: none"><u>OPTIONAL STREET PADS.....</u>	52

TABLE OF CONTENTS CONTINUES ON NEXT PAGE >>



HOW & WHERE TO BUY

EQUIPMENT FINANCING

Summit TX25H Tractor & LX85
Front End Loader Overview &
Walkaround Video: [Click Here](#)

Summit BHX76
Backhoe Overview &
Walkaround Video: [Click Here](#)

*This guide is for descriptive purposes only. Summit Tractors reserves the right to change the stated specifications and information without notice. Summit Tractors disclaims all representations and warranties, express or implied, and any liability from the use of this brochure. For complete warranty, safety and product information, visit www.summittractors.com and download the operator manual. Horsepower (HP) and other specifications are based on various standards or recommended practices. For your safety, Summit Tractors strongly recommends the use of the Rollover Protection Structure (ROPS) in the up position with the seat belt on, except when the ROPS needs to be lowered to enter a garage or other low clearance area.

Table of Contents / About This Guide

SECTION	PAGE(S)
SUMMIT BRAND ATTACHMENTS & IMPLEMENTS	
• <u>GENERAL DESCRIPTION</u>	53
SKID-STEER QUICK ATTACH MOUNTED ATTACHMENTS	
• <u>GX54 GRAPPLE</u>	54
• <u>PFX36 PALLET FORKS</u>	55
PTO-DRIVEN 3-POINT IMPLEMENTS	
• <u>RCX48 ROTARY CUTTER</u>	56
• <u>FMX60 FINISH MOWER</u>	57
• <u>RTLX54 ROTARY TILLER</u>	58
• <u>PHDX POST HOLE DIGGER</u>	59
• <u>SSX500 SEEDER/SPREADER</u>	60
OTHER 3-POINT IMPLEMENTS	
• <u>AFDHX60 ANGLE FRAME DISC HARROW</u>	61
• <u>BBX60 BOX BLADE</u>	62
• <u>BPX60 BOXPLANE</u>	63
• <u>DBX1 DISC BEDDER</u>	64
• <u>LPX60 LAND PLANE - LAND GRADER</u>	65
• <u>LRX60 LANDSCAPE RAKE</u>	66
• <u>MBX1 MIDDLE BUSTER</u>	67
• <u>RBX60 REAR BLADE</u>	68
• <u>TMX1 TRAILER MOVER</u>	69
DRAWBAR PULLED IMPLEMENTS	
• <u>DTX1.5 DUMP TRAILER</u>	70
HOW AND WHERE TO BUY	71
EQUIPMENT FINANCING	72
CONTACTING SUMMIT TRACTORS	73



ABOUT THIS INTERACTIVE GUIDE BOOK

At Summit Tractors, we believe that a compact tractor should come standard with everything an owner needs to use any attachment or implement sized for the tractor. That’s why all Summit Tractors come Ready to Go to Work™ with many standard features not found on any other compact tractor brand.

Using this guide, prospective buyers can learn about what each tractor feature does, how they work and what comes standard on Summit brand tractors. Additionally, we provide information on the most popular tractor attachments & implements, and the key specifications and features on the Summit equipment.

Use this interactive guide to learn about the equipment to help you decide if Summit brand compact tractor equipment is right for you. We proudly invite you to compare what you get for your Summit Tractor equipment investment to that of any other brand.

Note to Users: Look for **underlined** items throughout this guide to jump to the detailed information on that item. You can **Return to the Table of Contents** from the top right of any page.

[CLICK HERE TO SEE SUMMIT TRACTORS BROCHURE](#)



TX25H TRACTOR STANDARD FEATURES

MORE STANDARD FEATURES THAN ANY OTHER TRACTOR BRAND IN ITS CLASS



[Mitsubishi EPA Tier 4 24.7 HP Diesel Engine](#)



[Grapple Ready – 3rd Function Hydraulics](#)



[Rear Hydraulic Remotes](#)



[Skid Steer Quick Attach Self-Leveling Loader](#)



[Goodyear All Condition R14T Tires with
Rear Tires Ballasted w/Rimguard Liquid Tire Ballast](#)



[Hydrostatic Transmission with Side-By-Side Pedals](#)



[Swinging and Cross Drawbars, Front Tow Hook](#)



[Premium Suspension Seat](#)



[Mechanical 4WD](#)

[SUMMITTRACTORS.COM](#)



**FULL SERVICE
AVAILABLE**



TX25H
READY TO GO TO WORK™

Summit TX25H Tractor & LX85
Front End Loader Overview &
Walkaround Video:



SUMMIT TX25H TRACTOR & LX85 LOADER

The Summit TX25H Tractor & LX85 Front-End Loader come fully loaded with a wide range of standard features, many of which are options on other tractor brands. From rear hydraulic remotes, 3rd function diverter hydraulics that makes the self-leveling loader “grapple ready,” to Goodyear all-condition R14T tires, with the rear tires ballasted with RimGuard™ Liquid Tire Ballast --also known as “Beet Juice” – that adds 320 lbs. of weight to make the tractor safer, more stable and optimize loader lift capacity. Also standard on the tractor is a Mitsubishi EPA Tier 4 diesel engine, hydrostatic transmission and steering, premium suspension seat with backrest extension, angle adjustable folding armrests, rear view mirrors for added safety, swinging drawbar, cross drawbar, front tow hook, 4WD, differential lock, category I 3-point hitch with position control and transport lock, projector headlights, rear and mid-PTO, rear work light, USB connector, toolbox and 7-pin trailer socket.

Additional loader features include a skid-steer quick attach (SSQA) square back bucket, fender-mounted integrated joystick, loader float position, dual hydraulic bucket cylinders and a bucket level indicator, all standard.

As a statement of quality, the Summit TX25H tractor has the industry’s longest full machine warranty of three years, and a seven-year powertrain warranty.



TX25H Standard Features - Left Side View

[Table of Contents](#) / TX25H Features - Left Side View



Select a Feature Below to Learn More:

A – [SSQA Loader System](#)

B – [3rd Function Hydraulics \(Grapple Ready\)](#)

C – [Self-Leveling Loader](#)

D – [24.7HP Mitsubishi Diesel Engine](#)

E - [Premium Suspension Seat w/Backrest Extension](#)

F – [Folding ROPS](#)

G – [Fender-Mounted Integrated Joystick](#)

H – [Rear Hydraulic Remotes](#)

I – [Goodyear R14T All-Condition Tires](#)

J – [Entry Steps Both Sides](#)



A. SSQA Loader System

Easily change from the bucket to any SSQA compatible attachment such as a grapple or pallet forks



B. Grapple Ready – 3rd Function Hydraulics

Only loader in its class with a 3rd function as standard. Ready to use a grapple or any front attachment that uses a hydraulic cylinder



C. Self-Leveling Loader

Keeps the load level as you raise or lower, perfect for pallet fork use



D. 24.7HP Mitsubishi Diesel Engine

Among the most reliable engines in the industry, backed by a limited 7-year powertrain warranty



E. Premium Suspension Seat with Backrest Extension

The mechanical suspension absorbs the bumps, and can be set to the operator's weight

SUMMIT
—TRACTORS—
READY TO GO TO WORK™

TX25H Standard Features - Right Side View

[Table of Contents](#) / TX25H Features - Right Side View



A. Entry Steps Both Sides

Safely enter and exit the operator station from either side



B. Goodyear R14T All-Condition Tires

Perfect for all conditions, applies the features of AG, Industrial and Turf tires in one



C. Rear Hydraulic Remotes

Power rear-mounted implements that use a hydraulic cylinder



D. Folding Rops

Critical safety feature, always up when in use with seatbelt on, yet can fold down to temporarily get you into low clearance spaces



E. Fender-Mounted Integrated Joystick

Placed right beside the operator's hand so no reaching forward as with some other tractors in this class

Select a Feature Below to Learn More:

A – [Entry Steps Both Sides](#)

B – [Goodyear R14T All-Condition Tires](#)

C – [Rear Hydraulic Remotes](#)

D – [Folding ROPS](#)

E – [Fender-Mounted Integrated Joystick](#)

F – [Premium Suspension Seat w/Backrest Extension](#)

G – [24.7HP Mitsubishi Diesel Engine](#)

H – [Self-Leveling Loader](#)

I – [3rd Function Hydraulics \(Grapple Ready\)](#)

J – [SSQA Loader System](#)

SUMMIT
— TRACTORS —
READY TO GO TO WORK™

TX25H Standard Features - Front & Back View

[Table of Contents](#) / TX25H Features - Front & Back View

FRONT VIEW



REAR VIEW



Select a Feature Below to Learn More:

- A – [Projector Headlights](#)
- B – [Mitsubishi 24.7 HP EPA Tier 4 Diesel Engine](#)
- C – [Front Tow Hook](#)
- D – [Bucket Level Indicator](#)

Select a Feature Below to Learn More:

- A – [Swinging Drawbar](#)
- B – [Rear PTO](#)
- C – [LED Taillights](#)
- D – [7-Pin Trailer Socket](#)
- E – [SMV Sign](#)
- F – [Folding ROPS](#)
- G – [Rear Worklight](#)
- H – [Rear Hydraulic Remotes](#)
- I – [Cross Drawbar](#)
- J – [Goodyear R14T Tires](#)

TX25H Standard Features - Controls, Console & Engine

[Table of Contents](#) / TX25H Features - Controls, Console & Engine

CONTROLS



Hazard Lights
PTO Switch

Hand Throttle
Cruise Control

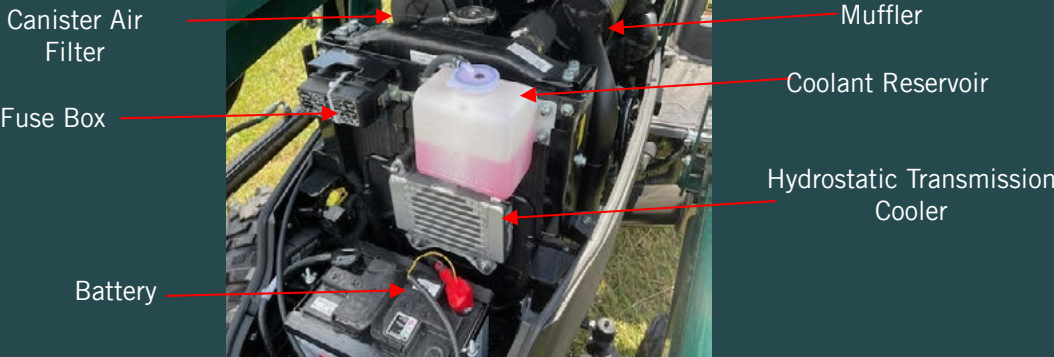
CONSOLE



- A. 7-Pin Trailer Socket
- B. PTO Selector
- C. Grab Rails on Both Sides
- D. Cup Holder
- E. L-R Transport Lock, Parking Brake, 4WD, Differential Lock
- F. Brake Pedal
- G. Easy Access Diesel Fuel Fill
- H. Tractor Console Close Up
- I. Side-by-Side Hydrostatic Transmission Pedals
- J. Operator Entry Steps Both Sides
- K. Position Control, 3-pt. Hitch & Rear Remote Control Lever
- L. Integrated Joystick with 3rd Function Diverter Button at Top
- M. 12V Power Connection
- N. Rear Worklight
- O. Premium Suspension Seat

MITSUBISHI 3-CYLINDER 24.7HP DIESEL ENGINE

Mitsubishi engines are widely used in tractors due to their reliability, fuel efficiency, and durability. They are commonly found in compact, subcompact, and utility tractors used in farming, landscaping, and industrial applications.



Hood Release - Left Front



Engine Oil Dipstick
Right Side Towards Back

Mitsubishi EPA Tier 4 24.7 HP Diesel Engine

[Table of Contents](#) / Mitsubishi Engine

Mitsubishi engines are widely used in tractors due to their reliability, fuel efficiency, and durability. They are commonly found in compact, subcompact, and utility tractors used in farming, landscaping, and industrial applications.

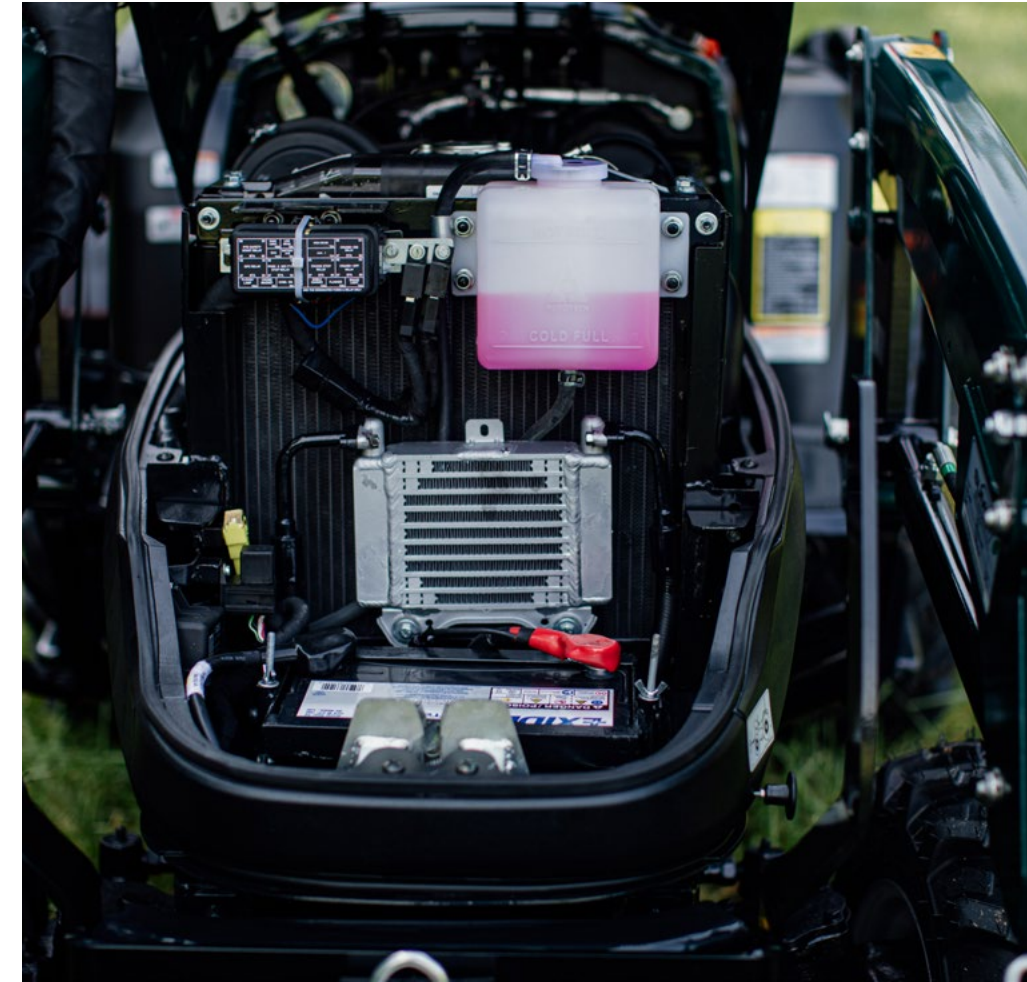
Key Features of Mitsubishi Tractor Engines:

1. **Diesel-Powered Efficiency** – Most Mitsubishi engines used in tractors are diesel, providing better fuel economy, torque, and longevity.
2. **Compact & Lightweight Design** – Ideal for small to mid-sized tractors, ensuring easy maneuverability.
3. **Liquid-Cooled Technology** – Helps maintain optimal engine temperature, preventing overheating.
4. **Emission Compliance** – Modern Mitsubishi engines meet EPA (Environmental Protection Agency) and EU emission standards, making them environmentally friendly.
5. **High Torque Output** – Delivers steady power for plowing, tilling, mowing, and loader work.

Why Mitsubishi Engines Are Popular in Tractors:

- **Reliable & long-lasting**
- **Fuel-efficient diesel technology**
- **Easy to maintain with available parts**
- **Proven performance in compact tractors**

Mitsubishi continues to manufacture small diesel engines for various agricultural and industrial applications, making them a trusted choice for compact tractor manufacturers worldwide.



2-RANGE HYDROSTATIC TRANSMISSION – SUMMIT STANDARD:

A 2-range hydrostatic transmission on a tractor is a gearless, fluid-driven transmission system that provides two speed ranges—low (L) and high (H)—allowing for smooth speed control without shifting gears manually. It operates using hydraulic pressure to transfer power from the engine to the wheels.

Primary Uses of a 2-Range Hydrostatic Transmission:

1. **Ease of Operation** – No clutching or shifting; speed is controlled with a foot pedal or hand lever.
2. **Precise Speed Control** – Ideal for loader work, mowing, and landscaping, where fine adjustments are needed.
3. **Smooth Direction Changes** – Allows quick forward and reverse movement, useful for loader and backhoe work.
4. **Reduced Operator Fatigue** – Less strain compared to manual transmissions, making it easier for long work hours.
5. **Great for Beginners** – Simple to use, making it ideal for new operators or residential tractor owners.

How a 2-Range Hydrostatic Transmission Works:

- **Low Range (L)** – Provides higher torque, lower speed, ideal for heavy loads, plowing, or rough terrain.
- **High Range (H)** – Allows for higher speeds, lower torque, best for transporting, mowing, or light-duty work.

Advantages of a 2-Range Hydrostatic Transmission:

- Simple operation
- Smooth speed control
- Quick forward/reverse switching
- Ideal for loader work
- A 2-range hydrostatic transmission is perfect for compact and utility tractors used for mowing, loader work, and property maintenance, offering ease of use and smooth performance.



Rear Hydraulics Remotes

Rear hydraulic remotes on a tractor are hydraulic connections located at the back of the machine, allowing the operator to control hydraulically powered implements. These remotes provide pressurized hydraulic flow to attachments, enabling movement or operation beyond basic lifting and lowering functions.

Primary Uses of Rear Hydraulic Remotes:

1. **Operating Hydraulic Cylinders** – Powers implements like box blades, disc harrows, or backhoes with hydraulic tilt, angle, or depth adjustments.
2. **Running Hydraulic Motors** – Drives equipment such as grain augers, sprayers, or hydraulic-driven seeders.
3. **Controlling a Hydraulic Top Link** – Adjusts the pitch of implements like bush hogs, tillers, and plows without manual effort.
4. **Using Log Splitters** – Supplies hydraulic pressure to split wood using a tractor-mounted log splitter.
5. **Raising & Lowering Hay Equipment** – Operates features on hay rakes, balers, or mower-conditioners.
6. **Dumping Hydraulic Trailers** – Powers dump trailers or grain carts to lift and unload materials.

Hydraulic remotes can be single-acting (one-way flow, used for lifting) or double-acting (two-way flow, used for extending and retracting hydraulic cylinders). Having multiple rear remotes increases versatility, allowing tractors to operate multiple hydraulic functions simultaneously.

The Summit TX25H Tractor comes standard with one set of self-cancelling detent rear hydraulic remotes.

Example Rear Remote Use – Dump Trailer – Raise/Lower From The Tractor Seat



Goodyear R14T tires are a hybrid tractor tire designed to provide a balance between traction, durability, and surface protection. They combine features of R1 (agriculture), R4 (industrial), and R3 (turf) tires, making them a versatile choice for compact and utility tractors.

Primary Uses of Goodyear R14T Tires on a Tractor:

1. **General Farming & Field Work** – Offers good traction in loose soil without excessive digging or compaction.
2. **Loader Work & Construction** – Handles the weight and wear of front-end loaders on gravel, dirt, and pavement.
3. **Lawn & Turf Applications** – Less aggressive tread than an R1, reducing damage to grass and turf.
4. **Snow Removal** – Provides better grip on icy and snowy surfaces than traditional agricultural tires.
5. **Landscaping & Property Maintenance** – Works well on gravel driveways, dirt paths, and mixed terrain.

Key Features:

- **Hybrid Tread Design** – A mix of R1, R4, and R3 patterns for balanced traction and flotation.
- **Durability** – Stronger sidewalls than R1s, making them more resistant to punctures and wear.
- **Versatility** – Performs well in mud, gravel, snow, and grass, making them a great all-around option.
- **Less Turf Damage** – Softer impact on lawns compared to standard R1 tires.

Goodyear R14T tires are a great choice for tractor owners who need one tire to handle multiple terrains without constantly switching between different types. They are ideal for compact and utility tractors used in farming, landscaping, and maintenance.

The Summit TX25H Tractor comes standard with Goodyear R14T all condition tires with the rears filled with 30 gallons (320 lbs.) of Rimguard Liquid Tire Ballast (aka Beet Juice)



RimGuard is a liquid tire ballast used in tractor tires to increase stability, traction, and weight distribution. It is made from non-corrosive beet juice, making it an environmentally friendly alternative to traditional liquid ballast options like calcium chloride or windshield washer fluid.

Benefits of Using RimGuard Liquid Tire Ballast:

- 1. **Increases Traction** – Adds weight to the tires for better grip, especially in wet, muddy, or snowy conditions
- 2. **Lowers Center of Gravity** – Improves stability on slopes and reduces the risk of tipping over.
- 3. **Non-Corrosive** – Unlike calcium chloride, RimGuard does not corrode rims or metal components.
- 4. **Non-Toxic & Biodegradable** – Safe for the environment, animals, and plants.
- 5. **Denser Than Water** – Provides more weight per gallon compared to water, making it more effective for ballast.
- 6. **Freeze-Resistant** – Won't freeze in cold temperatures, making it ideal for winter operations.

RimGuard is commonly used in rear tractor tires to improve balance when using front-end loaders, plows, or other heavy attachments. It's a great option for farmers and property owners looking to enhance their tractor's performance without the risks of corrosion or toxicity.

SUMMIT TX25H TRACTOR WITH RIMGUARD™

The rear tires of every Summit TX25H Tractor come standard with a total of 320 lbs. (30 gallons) of RimGuard so the tractor is stable, safer and the loader will work to its optimum level. No other tractor brand in its class comes with RimGuard™ as standard.



To see how RimGuard works, check out this video:



Hydraulic steering on a tractor is a power-assisted steering system that uses hydraulic pressure to reduce the effort needed to turn the wheels. It makes steering smoother, more precise, and less physically demanding, especially when operating heavy tractors or using front-end loaders.

Primary Uses of Hydraulic Steering on a Tractor:

1. **Easier Maneuverability** – Reduces steering effort, making it easier to turn, even when carrying heavy loads.
2. **Improved Control in Rough Terrain** – Provides consistent steering response on bumpy, muddy, or uneven ground.
3. **Enhanced Loader Work Efficiency** – Helps operators quickly adjust steering while handling materials with a front-end loader.
4. **Reduced Operator Fatigue** – Lessens strain on the operator, especially during long hours of fieldwork.
5. **Better Stability at Higher Speeds** – Provides smoother control when driving on roads or transport routes.

How Hydraulic Steering Works:

- A hydraulic pump supplies pressurized fluid to the steering cylinder.
- When the operator turns the steering wheel, the hydraulic system assists the movement of the front wheels.
- The system includes control valves that direct fluid flow for precise steering adjustments.

Types of Hydraulic Steering:

- **Hydrostatic Steering** – Fully hydraulic, with no mechanical connection between the steering wheel and wheels (common in large tractors).
- **Hydraulic Power-Assisted Steering** – Uses hydraulics to assist traditional mechanical linkages.



Advantages of Hydraulic Steering:

- **Reduces operator effort**
- **Enhances steering precision**
- **Handles heavy loads with ease**
- **Works well in all terrains**

Hydraulic steering is a key feature in modern tractors, making fieldwork, loader operations, and transport tasks much easier and more efficient.

Mechanical 4WD (Four-Wheel Drive) on a tractor is a drivetrain system that engages both the front and rear wheels to improve traction, stability, and pulling power, especially in tough terrain or heavy workloads.

Primary Uses of Mechanical 4WD on a Tractor:

- 1. Enhancing Traction** – Provides better grip in mud, snow, wet fields, or loose soil by powering all four wheels.
- 2. Improving Stability** – Reduces the chance of slipping or getting stuck, especially on slopes or uneven ground.
- 3. Increasing Pulling Power** – Helps when plowing, disking, or towing heavy loads by distributing power evenly.
- 4. Reducing Rear Tire Slippage** – Takes stress off the rear wheels, preventing excessive wear and loss of efficiency.
- 5. Maximizing Fuel Efficiency in Fieldwork** – Reduces wheel spin, which can save fuel and increase productivity.

How Mechanical 4WD Works:

- Power is distributed to all four wheels via a mechanical linkage from the engine.
- Activated by a lever or switch, engaging the front axle along with the rear.
- Some systems have limited-slip or locking differentials to further improve traction.
- Can be manually engaged or disengaged as needed to optimize efficiency.

Mechanical 4WD is a critical feature for farming, construction, and utility tractors, allowing operators to work in rough conditions with greater power, efficiency, and stability.



When to Use Mechanical 4WD:

- Soft, muddy, or sandy terrain
- Working on slopes or hills
- Heavy-duty fieldwork (plowing, tilling, hauling)
- Snow removal or wet conditions

When NOT to Use 4WD:

- X On dry, hard surfaces** – Increases tire wear and fuel consumption.
- X At high speeds on roads** – Can cause drivetrain stress and inefficient handling.

Premium Suspension Seat with Backrest Extension

A suspension seat adds comfort to the ride by absorbing the bumps. A backrest extension on a tractor is an add-on or built-in support designed to increase the height and comfort of the tractor seat’s backrest. It provides better lumbar and upper back support, especially for operators spending long hours in the seat.

The Summit TX25H Tractor comes standard with a suspension seat that can be adjusted to the operator’s weight, with angle adjustable folding armrests to set the armrest in the perfect position to operate the joystick regardless of operator height. The PVC coated seat material is durable, won’t crack as with vinyl covered seats and dries within minutes after rain.

Primary Uses of a Premium Suspension Seat on a Tractor:

- 1. **Improving Operator Comfort** – Reduces fatigue by providing additional back support during extended use.
- 2. **Enhancing Posture** – Helps maintain a proper seating position, reducing strain on the back and shoulders.
- 3. **Supporting Taller Operators** – Accommodates users who need extra height in the seatback for better ergonomic support.
- 4. **Reducing Vibration & Shock** – Some backrest extensions include padding or suspension to absorb vibrations from rough terrain.
- 5. **Increasing Safety** – Helps stabilize the operator, especially when working on uneven ground or using rear-mounted attachments.

Backrest extensions are commonly found on larger tractors, construction equipment, and utility vehicles, and they may be adjustable, padded, or integrated into deluxe seating options for enhanced comfort. A backrest extension is standard on all Summit Tractors, uncommon in the compact tractor class.



A cross drawbar is a horizontal hitching bar that mounts between the lower lift arms of a tractor’s 3-point hitch, providing a secure attachment point for pull-type implements and trailers.

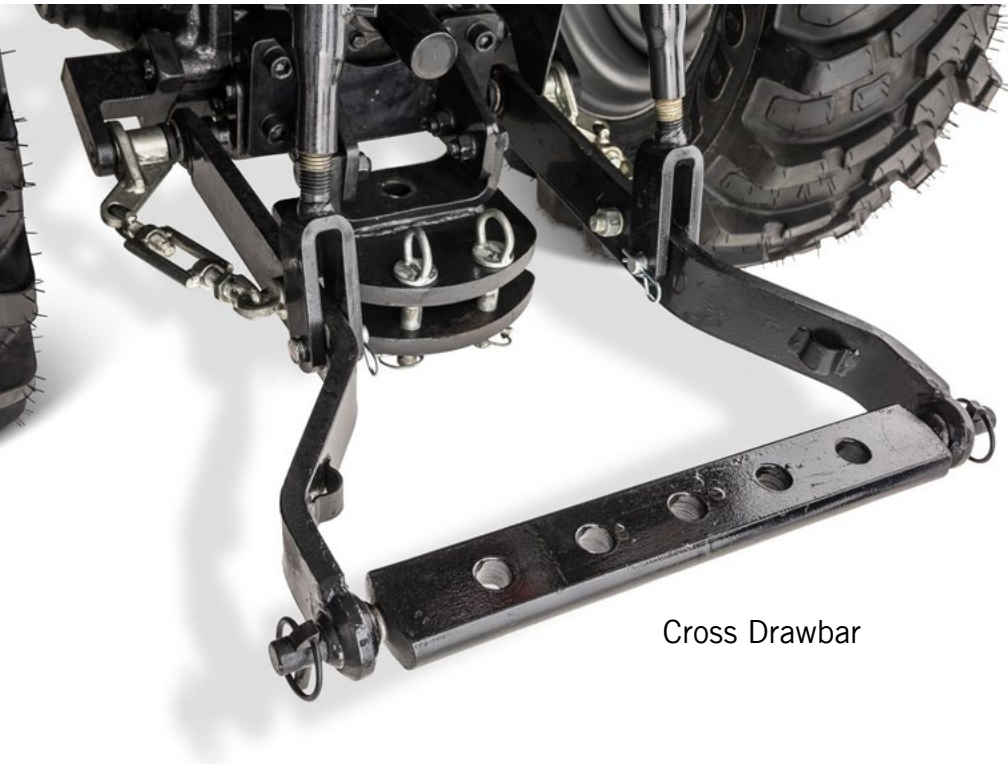
Primary Uses of a Cross Drawbar on a Tractor:

- 1. **Towing Implements & Trailers** – **Provides a stable hitching point for wagons, carts, and ground-driven equipment.**
- 2. **Distributing Load Evenly** – Reduces stress on the tractor’s lift arms by spreading the towing force.
- 3. **Quick Attachment & Removal** – Easily installs between the lower lift arms without requiring a full hitch setup.
- 4. **Adjustable Height** – Can be raised or lowered using the 3-point hitch, making it versatile for different implements.
- 5. **Pulling Equipment Without a PTO** – Ideal for pulling plows, harrows, rollers, and other ground-engaging implements that don’t require a PTO connection.

Differences Between a Cross Drawbar & Swinging Drawbar:

- A cross drawbar is attached to the 3-point hitch arms, allowing height adjustment.
- A swinging drawbar is a fixed hitch mounted directly to the tractor’s frame and allows side-to-side movement.

A cross drawbar is a simple yet effective solution for pulling non-powered equipment, commonly used in farming, construction, and property maintenance applications.



Cross Drawbar



Cross Drawbar

Swinging Drawbar

Folding Rollover Protection Structure

A folding ROPS (Rollover Protective Structure) on a tractor is a safety frame or bar designed to protect the operator in case of a rollover, with the added feature of being able to fold down when necessary.

Primary Uses of a Folding ROPS on a Tractor:

1. **Rollover Protection** – Prevents serious injury by creating a protective zone around the operator in case of a tractor overturn.
2. **Allows Clearance in Low-Hanging Areas** – Can be folded down to fit into low garages, barns, or under trees.
3. **Enhances Safety While Operating on Slopes** – Essential for hilly terrain, where rollovers are more likely.
4. **Meets Safety Regulations** – Many tractors require ROPS for compliance with farm safety laws.
5. **Easy Storage & Transport** – The foldable design helps when hauling the tractor on trailers or storing in compact spaces.

How It Works:

- The ROPS frame is hinged, allowing the operator to raise it for safety or fold it down when needed.
- It is usually secured with pins or latches for quick adjustment.
- Works best when used with a seatbelt, ensuring the operator stays within the protective zone in case of a rollover.

When to Keep ROPS Up vs. Folded:

- **UP** – When driving on hills, rough terrain, open fields, or public roads (for maximum protection).
- **DOWN** – Only when clearance is needed, such as inside barns or under trees, but it reduces rollover protection.

A folding ROPS provides the best of both worlds—safety when needed and flexibility when space is limited. It's a crucial feature for modern compact, utility, and farm tractors, ensuring operator protection while allowing adaptability in tight spaces.



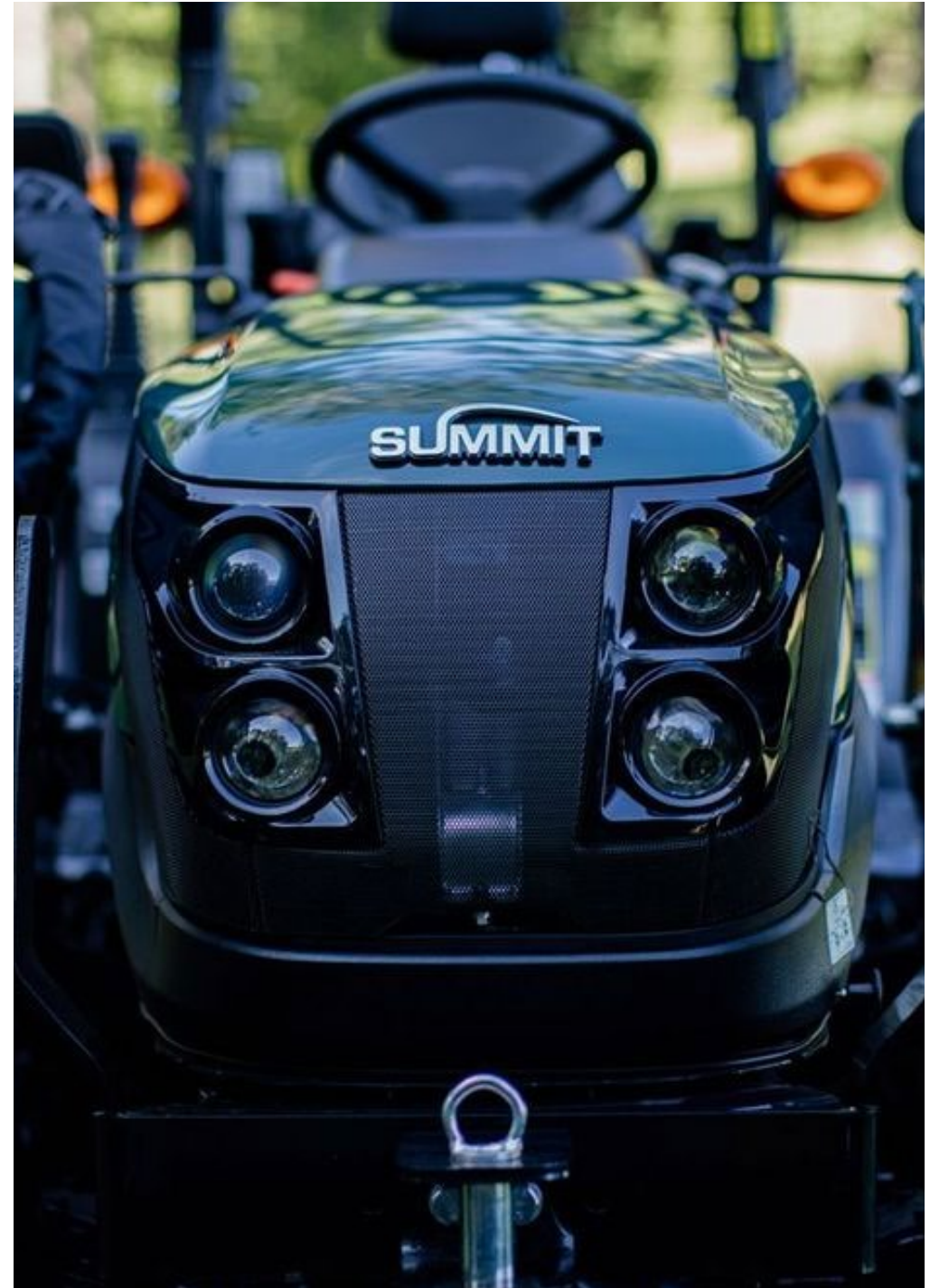
Front Tow Hook

A front tow hook on a tractor is a heavy-duty attachment point used for pulling, towing, or recovering the tractor or other equipment. It is typically mounted to the front frame of the tractor and provides a secure location for attaching chains, straps, or ropes.

Primary Uses of a Front Tow Hook on a Tractor:

- 1. Pulling or Towing Equipment** – Used to tow trailers, wagons, or other machinery when a hitch isn't available.
- 2. Vehicle Recovery** – Helps extract a stuck tractor from mud, snow, or ditches using another vehicle or winch.
- 3. Dragging Logs or Debris** – Can be used to pull logs, brush, or heavy objects around a property.
- 4. Assisting in Maneuvering** – Makes it easier to reposition a tractor using another vehicle in tight spaces.
- 5. Securing the Tractor for Transport** – Provides a strong anchor point for tie-downs when hauling the tractor on a trailer.

Front tow hooks are built to handle heavy loads and high-stress pulling situations, making them an essential feature for farm, construction, and off-road tractor use.



A rear PTO (Power Take-Off) on a tractor is a rotating drive shaft that transfers mechanical power from the tractor's engine to an attached implement. This allows the tractor to operate various powered attachments without needing a separate engine for each one.

A mid-PTO (Mid Power Take-Off) on a tractor is a secondary PTO shaft located underneath the tractor, typically used to power mid-mounted or front-mounted attachments. It operates separately from the rear PTO, allowing for greater versatility in equipment usage.

Primary Uses of a PTO on a Tractor:

1. **Operating Mowers & Cutters** – Powers rotary cutters, finish mowers, and flail mowers for field and lawn maintenance.
2. **Running a Baler** – Supplies power to round and square balers for hay production.
3. **Driving a Post Hole Digger** – Provides rotational force to hydraulic or auger-based post hole diggers.
4. **Powering Snowblowers** – Runs rear or front-mounted snowblowers for clearing driveways and roads.
5. **Running Tillers & Cultivators** – Turns rotary tillers for preparing soil for planting.
6. **Operating Pumps & Sprayers** – Provides power to irrigation pumps, fertilizer sprayers, and slurry spreaders.
7. **Driving Grain Augers & Feed Grinders** – Used for handling grain, feed, and silage processing.

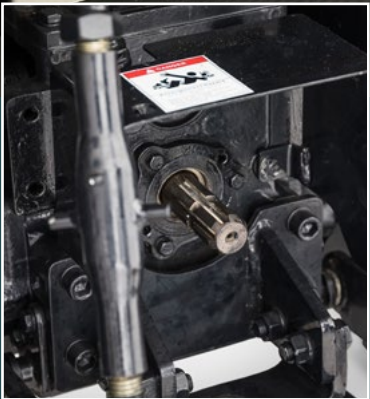
Summit Tractors PTO Systems:

1. **Independent PTO (IPTO)** – Fully independent, with its own engagement system, not affected by the tractor's movement.
2. **PTO Speeds:**
 - **540 RPM (Rear PTO)** – Common for most compact and utility tractors.
 - **Mid-PTO (2,100 RPM)** – For front attachments such as snow blowers and mid-mounted attachments such as mid-mount mowers (mid mowers not available for Summit Tractors – we always recommend 3-point finish mowers for mowing – they cost less, are easier to mount/dismount, can cut under tree branches and provide an excellent cut.



Safety Considerations:

- Always disengage the PTO before servicing or adjusting an implement.
- Use a PTO shield to prevent accidental contact with the spinning shaft.
- Never wear loose clothing around a running PTO, as it can cause entanglement.



The PTO is one of the most essential tractor features, allowing a single engine to power multiple implements, making modern farming, landscaping, and property maintenance more efficient.

The Summit TX25H Tractors comes standard with a mid and rear PTO, which can be operated individually or together using the mode selector lever.

Projector headlights on a tractor are advanced lighting systems designed to provide brighter, more focused illumination compared to traditional reflector-style headlights. They use a lens system to direct and concentrate light, improving visibility in low-light conditions.

Benefits of Projector Headlights on a Tractor:

1. **Brighter & More Focused Beam** – Produces a sharper, more intense light, improving visibility at night.
2. **Longer Range Illumination** – Projects light farther down the field or road for safer operation.
3. **Reduced Glare** – More controlled light distribution prevents excessive glare for oncoming vehicles or workers.
4. **Better Performance in Dust & Fog** – The focused beam cuts through dust, fog, and mist more effectively.
5. **Energy Efficiency** – Often paired with LED or HID bulbs, consuming less power than traditional halogen lights.
6. **Durability & Longevity** – More resistant to vibrations, making them ideal for rough terrain and heavy-duty use.

Common Uses on Tractors:

- **Fieldwork at Night** – Enhances visibility for planting, harvesting, or spraying in low-light conditions.
- **Road Travel & Safety** – Improves lighting when driving tractors on public roads.
- **Snow Removal** – Helps operators see clearly in dark, snowy, or foggy conditions.
- **Construction & Industrial Use** – Essential for working in early morning or late evening hours.

Projector headlights are becoming increasingly popular on modern tractors because they provide better nighttime visibility, reduce operator fatigue, and improve overall safety compared to older-style reflector lights.



Rear Worklight

A rear worklight on a tractor is a powerful light mounted on the back of the cab or fenders, designed to illuminate the area behind the tractor when working in low-light or nighttime conditions. It helps improve visibility and safety when operating implements or maneuvering in the dark.

Primary Uses of a Rear Worklight on a Tractor:

1. **Enhancing Visibility for Night Work** – Provides light for tasks like plowing, baling, planting, or spreading fertilizer at night.
2. **Assisting with Implement Hookup** – Helps when attaching or detaching equipment in dark conditions.
3. **Improving Safety When Reversing** – Illuminates obstacles, people, or animals behind the tractor.
4. **Lighting Up Work Areas** – Useful for inspecting fields, working around barns, or loading/unloading materials.
5. **Snow Removal & Road Work** – Helps operators see clearly when clearing driveways, roads, or parking areas in winter conditions.

Rear worklights are an essential upgrade for farmers, construction crews, and property owners who work in low-light conditions, ensuring better productivity and safety.



Side-view mirrors on a tractor are adjustable mirrors mounted on the sides of the cab or frame to provide a clear view of the area behind and beside the tractor. They enhance safety, visibility, and maneuverability, especially when operating in tight spaces, on roads, or when towing implements.

Primary Uses of Side-View Mirrors on a Tractor:

1. **Improving Rear Visibility** – Allows the operator to see behind the tractor without constantly turning around.
2. **Enhancing Road Safety** – Essential for monitoring traffic when driving the tractor on public roads.
3. **Maneuvering with Implements & Attachments** – Helps align and monitor large or wide implements such as balers, trailers, or planters.
4. **Backing Up & Parking** – Assists in reversing, especially when attaching equipment or parking in barns or sheds.
5. **Avoiding Obstacles & Hazards** – Helps spot people, animals, or objects in blind spots to prevent accidents.
6. **Monitoring Load Position** – Useful when transporting bales, pallets, or other materials with a front-end loader.

Summit Side-View Mirrors Type:

- Fully adjustable – for a better field of view.
- Can be removed if desired

Side-view mirrors are a critical safety feature, especially for tractors used in road transport, construction, and large-scale farming operations. They help operators maintain awareness of their surroundings, reducing accidents and improving efficiency.

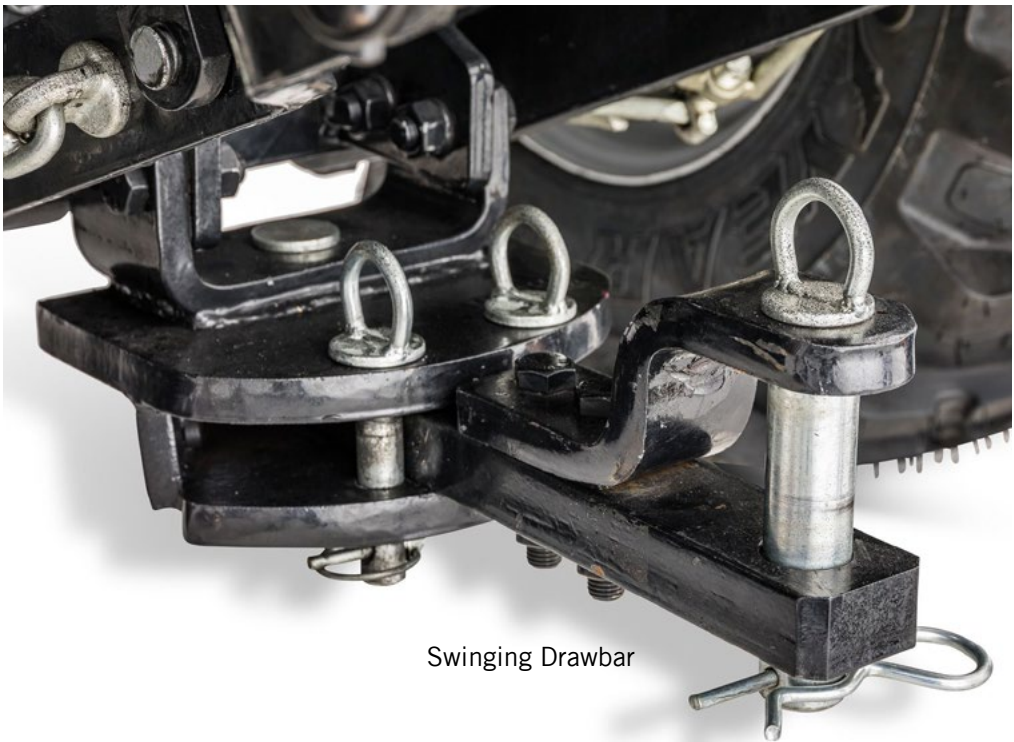


A swinging drawbar is a heavy-duty, adjustable hitching point mounted beneath the rear of a tractor. It is designed to pivot side to side, allowing flexibility when towing implements or trailers.

Primary Uses of a Swinging Drawbar on a Tractor:

- 1. Pulling Trailers & Implements** – Provides a sturdy connection point for wagons, balers, plows, and other towable equipment.
- 2. Reducing Side Load on Implements** – The swinging motion helps reduce stress on the hitch and allows better maneuverability.
- 3. Making Turns Easier** – The pivoting action allows smoother turns, especially when pulling ground-driven implements.
- 4. Enhancing Traction & Stability** – Adjusting the drawbar position can help balance the tractor’s weight distribution.
- 5. Protecting PTO Shafts** – Reduces strain on PTO-driven implements by allowing more natural movement during turns.

Swinging drawbars provide a versatile and durable hitching option compared to a fixed drawbar, making them ideal for towing and fieldwork.



Swinging Drawbar



Cross Drawbar

Swinging Drawbar

A toolbox on a tractor is a storage compartment designed to hold tools, spare parts, and essential equipment for fieldwork, maintenance, and repairs. It is typically mounted on the side, fender, or rear of the tractor for easy access.

Primary Uses of a Toolbox on a Tractor:

- 1. **Carrying Essential Tools** – Stores wrenches, screwdrivers, pliers, and sockets for quick adjustments and repairs.
- 2. **Holding Spare Parts & Hardware** – Keeps extra bolts, pins, fuses, and hitch clips readily available.
- 3. **Storing Grease & Lubricants** – Ensures access to grease guns, oil, and lubricants for on-the-go maintenance.
- 4. **Keeping Safety Gear** – Holds gloves, safety glasses, and first-aid kits for operator protection.
- 5. **Securing Hitch Pins & Implements Accessories** – Prevents loss of essential tractor parts when switching attachments.
- 6. **Field Repairs & Adjustments** – Provides quick access to tools for adjusting implements, fixing hydraulic lines, or replacing worn-out parts.

Types of Tractor Toolboxes:

Summit Toolbox: Weatherproof & Lockable – Provide extra protection from rain, dirt, and theft.

A tractor toolbox is an essential accessory for farmers, landscapers, and construction operators, helping ensure minimal downtime by keeping tools and supplies close at hand for maintenance and repairs in the field.



HEAVIEST TRACTOR IN ITS CLASS:

The weight of a tractor is a crucial factor that affects traction, stability, efficiency, and overall performance in various agricultural, construction, and industrial tasks. A well-balanced tractor weight ensures optimal performance while minimizing risks such as slippage, tipping, or soil compaction.

Key Reasons Why Tractor Weight is Important:

1. Traction & Pulling Power

- Heavier tractors have better traction, reducing wheel slippage when pulling implements like plows, harrows, and seeders.
- Essential for tasks that require high torque, such as deep tillage, heavy hauling, and loader work.

2. Stability & Safety

- A properly weighted tractor reduces the risk of tipping over, especially when operating on hills, slopes, or rough terrain.
- Front-to-rear balance is critical—for example, front-end loaders require rear ballast (e.g., wheel weights or liquid ballast) to prevent front tipping.

3. Efficiency & Fuel Consumption

- A tractor that is too light may lose traction, leading to increased fuel consumption as more power is needed to compensate for wheel slippage.
- Proper weight distribution ensures efficient energy transfer, improving productivity and reducing wear on tires and drivetrain components.

4. Soil Compaction Considerations

- Excessive weight can cause soil compaction, which reduces root growth and water infiltration.
- Proper weight management (using dual tires, flotation tires, or controlled traffic farming) helps minimize soil damage.

5. Counterbalance for Attachments & Implements

- Front and rear ballast weights (such as wheel weights, suitcase weights, or liquid-filled tires) are used to balance the tractor when using heavy implements.
- Example: A front-end loader requires additional rear weight to maintain stability and prevent tipping.

A properly weighted tractor ensures better traction, stability, fuel efficiency, and soil protection, making weight a critical factor in tractor performance and safety.



How to Manage Tractor Weight Effectively:

- **Use Ballast When Needed** – Add wheel weights, suitcase weights, or liquid ballast to improve traction and stability.
- **Avoid Excessive Weight** – Too much weight can increase fuel consumption and compact soil.
- **Match Weight to Task** – Lightweight for mowing to reduce turf damage; heavier for plowing or loader work to maximize traction.

3-Point Transport Lock

A 3-point transport lock on a tractor is a safety mechanism that locks the 3-point hitch in a raised position during transport or when not in use. This prevents accidental lowering of the attached implement, ensuring safe movement and storage.

Primary Uses of a 3-Point Transport Lock:

1. **Prevents Unintended Lowering** – Keeps the hitch and attached implements securely raised during transport.
2. **Enhances Road Safety** – Avoids the risk of an implement dropping while driving on roads or uneven terrain.
3. **Protects Implements & Tractor Components** – Reduces stress on hydraulics and linkages by keeping the hitch stable.
4. **Aids in Storage & Maintenance** – Holds the 3-point arms in place when the tractor is parked.
5. **Improves Operator Safety** – Prevents injury from sudden drops of heavy implements.
6. **Controls the 3-point lowering speed** when in use.

How It Works:

- The transport lock on a Summit TX25H Tractor is controlled by a round dial on the front of the seat base secures the hitch in the raised position or adjusts the speed at which the 3-point lowers when in use.

A 3-point transport lock is an important safety feature that helps prevent damage and accidents, making it essential when moving tractors with mounted implements over long distances, as well as controlling the 3-point hitch lowering speed.



3-Point Transport Lock

7-Pin Trailer Socket

A 7-pin trailer socket on a tractor is an electrical connector used to supply power and signals to a trailer's lighting and braking system. It ensures that the trailer's brake lights, turn signals, and auxiliary functions operate properly when towing.

Primary Uses of a 7-Pin Trailer Socket on a Tractor:

1. **Powering Trailer Lights** – Provides electrical signals for brake lights, turn signals, tail lights, and running lights.
2. **Operating Trailer Brakes** – Supplies power to electric or hydraulic trailer brakes for safer stopping.
3. **Connecting Auxiliary Power** – Can power trailer-mounted equipment, such as sprayers or grain cart augers.
4. **Running Work Lights on the Trailer** – Allows additional lighting for nighttime or low-visibility conditions.
5. **Ensuring Road Safety Compliance** – Meets legal requirements for trailers traveling on public roads.

Standard Wiring Functions of a 7-Pin Socket:

- **Pin 1 (Yellow):** Left turn signal & brake light
- **Pin 2 (Blue):** Electric trailer brakes or hydraulic brake controller
- **Pin 3 (White):** Ground wire
- **Pin 4 (Green):** Right turn signal & brake light
- **Pin 5 (Brown):** Tail lights & running lights
- **Pin 6 (Red or Black):** Auxiliary power (e.g., interior trailer lights, hydraulic functions)
- **Pin 7 (Purple or Gray):** Reverse lights (backup function)

The 7-pin trailer socket is a critical component for towing, ensuring that all lighting and braking functions operate correctly for safety and visibility.



12V Connector

A 12V connector on a tractor is a power outlet that allows operators to charge and run USB-powered devices using the tractor's 12-volt electrical system. It typically converts 12V DC power to 5V USB power, making it compatible with modern electronics.

Primary Uses of a 12V Connector on a Tractor:

1. **Charging Mobile Phones & Tablets** – Keeps smartphones, tablets, or radios powered during long workdays.
2. **Running GPS & Navigation Systems** – Powers GPS guidance units for precision farming.
3. **Operating Bluetooth & Communication Devices** – Supports wireless headsets, CB radios, and two-way communication systems.
4. **Powering Cameras & Dash Cams** – Supplies power for rear-view cameras, implement monitoring cameras, or dash cams.
5. **Using LED Work Lights** – Some low-power LED lights or small electronic accessories can be powered via USB.
6. **Charging Power Banks & Portable Tools** – Ensures backup power for mobile devices or battery-powered equipment.

Advantages of a 12V Connector on a Tractor:

- Provides convenient charging for modern electronics
- Prevents drained phone batteries while working in the field
- Eliminates the need for separate power adapters
- Compact and easy to use

This feature is especially useful for farmers, landscapers, and contractors who rely on electronic devices while working.



12V USB Connector



A differential lock on a tractor is a mechanical or hydraulic feature that locks both rear wheels together, forcing them to turn at the same speed. This helps improve traction and stability in slippery or uneven terrain.

Primary Uses of a Differential Lock on a Tractor:

- 1. Preventing Wheel Slippage** – Ensures both rear wheels rotate together to maintain grip on mud, snow, loose soil, or wet grass.
- 2. Enhancing Traction in Tough Conditions** – Helps pull through soft fields, steep slopes, and rough terrain.
- 3. Improving Stability on Uneven Ground** – Reduces the chance of one wheel spinning freely when one side of the tractor is on solid ground and the other in a rut or soft spot.
- 4. Assisting with Heavy Loads** – Provides extra traction when pulling heavy trailers, plows, or other implements.
- 5. Preventing Uneven Power Distribution** – Ensures equal power delivery to both wheels when driving through obstacles, ditches, or slippery areas.

How a Differential Lock Works:

- Engaged by Foot Pedal or Lever** – Most tractors have a foot pedal or hand lever that activates the differential lock.
- Locks the Rear Axle Together** – When activated, both rear wheels turn at the same speed, eliminating independent wheel movement.
- Disengages Automatically or Manually** – Many tractors automatically disengage when the operator lifts off the pedal, while others require manual disengagement.

A differential lock is an essential feature for farmers, landscapers, and construction operators, helping to maximize traction and prevent getting stuck in difficult conditions.



When to Use a Differential Lock:

- Slippery conditions – Mud, snow, sand, or wet grass
- Uneven terrain – Ditches, ruts, or hills
- Heavy pulling or plowing – When extra traction is needed

When NOT to Use a Differential Lock:

- X On Hard Surfaces – Can cause tire wear and difficulty turning.
- X When Turning Sharply – Can make steering harder and cause tire skidding.

Entry-Exit Grab Rails

Grab rails on a tractor are sturdy handrails mounted on the cab, fenders, or frame to provide safe handholds for the operator when entering, exiting, or maneuvering around the tractor.

Primary Uses of Grab Rails on a Tractor:

- 1. Safe Entry & Exit** – Provides a secure grip for climbing into or out of the tractor, reducing the risk of slips and falls.
- 2. Operator Stability** – Helps the operator maintain balance and stability, especially when stepping onto the tractor in muddy or uneven conditions. Common Locations of Grab Rails:
 - **Cab Entry Points** – Mounted near the door or steps for easy access.
 - **Fender-Mounted Rails** – Found on open-station tractors to assist with climbing on and off.

Benefits of Grab Rails:

- **Increases operator safety**
- **Reduces risk of falls and injuries**
- **Provides extra stability in rough conditions**
- **Essential for tractors used in construction, farming, and forestry**

Grab rails are a simple yet crucial safety feature that ensures safe handling and operation of tractors in various work environments.



Entry-Exit Grab Rails on Both Sides

Entry steps on a tractor are metal or reinforced steps mounted near the operator’s cab or platform, designed to provide safe and easy access when climbing onto or off the tractor.

Primary Uses of Entry Steps on a Tractor:

- 1. **Safe Access to the Operator’s Seat** – Provides a stable footing for climbing into or out of the tractor.
- 2. **Reducing Slip & Fall Risks** – Many steps have non-slip surfaces or grip patterns to improve safety, especially in muddy or wet conditions.
- 3. **Easier Mounting & Dismounting** – Important for larger tractors with high ground clearance, making it easier for operators of all heights to get in and out.
- 4. **Improving Accessibility** – Helps older operators or those with limited mobility enter the tractor more comfortably.
- 5. **Assisting with Maintenance & Inspection** – Provides a stable platform for checking fuel tanks, engine compartments, and hydraulic connections.

Benefits of Entry Steps:

- Prevents slips and injuries
- Enhances comfort and accessibility
- Durable and weather-resistant

Tractor entry steps are a small but critical feature that ensures safety, convenience, and efficiency when getting in and out of the machine.



Entry-Exit Steps on Both Sides

Summit LX85 Front-End Loader



A front-end loader on a tractor is a versatile attachment used for a variety of tasks, mainly involving lifting, carrying, and moving materials. It consists of a large bucket mounted on the front of the tractor, which can be raised, lowered, tilted, and dumped. Loaders equipped with a Skid Steer Quick Attach (SSQA) system enable the use of a range of attachments including grapples (if equipped with a 3rd hydraulic valve), front blades and pallet forks. Common uses of a front-end loader include:

- Moving soil, gravel, sand, or mulch
- Digging and scooping
- Loading materials into trucks
- Hauling and lifting
- Snow removal



Select a Feature Below to Learn More:

- | | |
|---|---|
| A – Dual Bucket Cylinders | F – On-Off Quick Connect w/Parking Stands |
| B – 3rd Function Hydraulics (Grapple Ready) | G – Bucket Level Indicator |
| C – Skid-Steer Quick Attach (SSQA) System | H – Integrated Fender Mounted Joystick |
| D – Square Back SSQA Bucket | I – Loader Lowering Speed Control |
| E – Mechanical Self-Leveling | |

SUMMIT LX85 FRONT-END LOADER

Summit TX85 Loader: The Summit LX85 loader comes standard with a 3rd function hydraulic diverter valve – grapple and front blade ready – the only brand in its class to do so, a Skid Steer Quick Attach System (SSQA), the loader is mechanically self-leveling - great with pallet forks to keep the load level, a bucket level indicator, and an integrated fender-mounted joystick.

3rd Function Hydraulics Diverter Valve

A 3rd function diverter valve on a compact tractor is a hydraulic component that allows you to operate additional hydraulic functions—typically on the front loader—beyond the standard up/down and tilt/curl motions.

Here’s the breakdown:

1. Standard front loader hydraulics use two hydraulic circuits:

- One to raise/lower the loader arms.
- One to tilt/curl the bucket.

2. A 3rd function lets you run another hydraulic attachment, like:

- A grapple
- A front-mounted snowblower chute rotation
- A hydraulic blade angle adjuster

Diverter Valve Function:

- A diverter valve temporarily re-routes (or “diverts”) one of your existing loader circuits to control an attachment. You usually can’t use the loader and attachment at the same time.

How It Works

- You push a button or flip a switch on your loader joystick.
- The diverter valve redirects hydraulic flow to the attachment.
- Let go of the button, and the flow goes back to the loader’s normal function.



Bucket Level Indicator

[Table of Contents](#) / Bucket Level Indicator

A bucket level indicator on a compact tractor front-end loader is a simple visual aid that helps you know when your bucket is level with the ground—without having to get out and look or guess from the seat.

Why It Matters:

- When grading, back-dragging, or scooping material, having the bucket level is key to doing clean, even work.
- Without an indicator, it's easy to accidentally tilt the bucket too far forward or back.



Dual Hydraulic Bucket Cylinders

Dual cylinders on a compact tractor loader bucket refer to two hydraulic cylinders that are used to control the movement of the bucket—usually for tilting or dumping functions. Here’s a quick breakdown of what they are and why they’re used:

What They Do:

- The hydraulic cylinders are mounted on either side of the loader arms, connected to the bucket.
- These cylinders extend and retract to tilt the bucket forward (dumping) or tilt it backward (curling).
- “Dual” just means there are two cylinders working in sync, one on each side.

Benefits of Dual Cylinders:

- More even force distribution: Keeps the bucket level and reduces twisting stress.
- Better power and control: Can handle heavier loads and precise movement.
- Increased durability: Less wear and tear on the loader frame and components over time.

Compared to Single Cylinder Setups:

- Some smaller or older machines may have only one center-mounted tilt cylinder.
- Single-cylinder setups can work fine but might not offer as much balance, power, or stability for larger/heavier jobs.



Fender Mounted Integrated Joystick

A fender-mounted joystick on a compact tractor is a hydraulic control lever that’s installed right on (or near) the right-side fender—within easy reach of the operator’s seat.

What It Does:

It controls your front-end loader (and sometimes a backhoe or third function hydraulics), letting you:

- Raise/lower the loader arms
- Curl/dump the bucket

The joystick connects to the tractor’s hydraulic valve system, making loader work much smoother and more intuitive.

Why It’s Fender-Mounted (Instead of Dash-Mounted):

- Better ergonomics — Your hand naturally rests near the fender
- Cleaner look and better visibility around the dash
- More direct linkage to the loader valve (less complex routing)
- Easier upgrades like third function kits (for grapples or hydraulic implements)

Movements:

- Push forward: Lowers the loader
- Pull back: Raises the loader
- Left: Bucket curls (scoops)
- Right: Bucket dumps
- Press Button: Changes from Dump/Curl to the 3rd Function Cylinder to open and close the jaws of a grapple for example
- Push forward to lock: Activates the float function



Fender Mounted Integrated Joystick



The float position on a tractor’s loader is a hydraulic control setting that allows the loader bucket or blade to move freely with the contours of the ground without exerting downward force. When engaged, the hydraulic system stops applying pressure, allowing the implement to “float” along the surface under its own weight.

Primary Uses of the Float Position:

- 1. **Grading & Leveling** – Helps smooth out gravel, dirt, or sand by letting the bucket follow the ground naturally.
- 2. **Snow Removal** – Prevents the bucket or blade from digging into the surface, making it ideal for clearing snow without damaging pavement or grass.
- 3. **Spreading Material Evenly** – Ensures consistent distribution of materials like gravel or soil when back-dragging.
- 4. **Reducing Tire & Hydraulic Stress** – Minimizes resistance and strain on the tractor’s hydraulics and tires, improving efficiency.
- 5. **Preventing Surface Damage** – Avoids gouging or digging into soft surfaces like lawns, preventing unnecessary ground disturbance.

How to Engage the Float Position:

- Most loaders use a joystick control: Push the loader control lever fully forward until it locks into place.
- The bucket will then follow the terrain freely rather than being forced down.

The float position is an essential feature for smoother ground engagement, reduced wear on the tractor, and better efficiency when grading, leveling, or clearing materials. Proper use of float mode ensures better results with less operator effort.



When to Use Float Position:

- Grading driveways, leveling soil, removing snow
- Spreading gravel, sand, or mulch
- Reducing hydraulic stress during transport

When to Avoid Float Position:

- X Digging, lifting, or applying downward force
- X Working on very uneven or rocky terrain (could cause bouncing)

Loader Lowering Speed Control

The Summit LX85 Loader comes equipped with a lowering speed control lever that enables you to set the speed at which the loader lowers to the ground. This is a great feature that allows each operator to set the speed based upon the work they are doing.



Quick-Attach Loader

[Table of Contents](#) / Quick-Attach Loader

The Summit LX85 loader has a quick-attach system that enables easy on/off when you want to take the loader off or put it on the tractor.

1. Park on Level Ground

- Set your tractor on flat, solid ground.
- Lower the loader bucket fully so it's resting flat on the ground.
- Put the tractor in park and set the parking brake.

2. Shut Down or Idle

- Some people do it with the engine running at idle.
- Others shut it off completely—follow your manual's advice.
- Make sure hydraulic pressure is off before disconnecting lines (wiggle joystick to relieve pressure if needed).

3. Drop the Loader Stands

- Flip down the built-in loader stands or kickstands.
- These support the loader once it's disconnected.

4. Pull the Loader Pins

- Locate and remove the mounting pins or levers that lock the loader to the tractor's frame.
- Some systems use spring-loaded handles; others have a pin you pull and stow.



Self-Leveling Loader

A self-leveling loader on a tractor is a type of front-end loader that automatically keeps the bucket or attachment level as it is raised or lowered. This means that no matter how high or low the loader arm is, the bucket remains in the same position (relative to the ground), making it easier to load materials smoothly and accurately.

Here’s how it works and why it’s useful:

How It Works:

- The loader has a special hydraulic system or linkage design that adjusts the angle of the bucket as it moves. When you raise or lower the loader arms, the bucket automatically adjusts its tilt to remain level.
- It eliminates the need for the operator to manually adjust the bucket’s angle to keep it level while lifting or carrying materials.

Benefits:

1. Improved Efficiency: Because the bucket stays level, you can load and carry materials more easily without needing to adjust the bucket angle each time. This reduces the time and effort required for tasks like scooping and transporting materials.
2. Less Spillage: When the bucket stays level, there’s less chance of materials spilling out while lifting or moving, which is especially important when carrying loose or granular materials like dirt or gravel.
3. Easier Operation: It simplifies the job for the operator by eliminating the need to constantly manage the bucket’s angle, making the loader more user-friendly, particularly for beginners.
4. Consistent Results: It ensures that you can load or unload materials in a controlled, even manner, which is ideal for tasks like filling trucks, leveling ground, or scooping materials.

Common Applications:

- Landscaping: For moving dirt, mulch, or gravel.
- Farming: Loading hay bales, feed, or other materials.
- Overall, a self-leveling loader improves productivity and ease of use on the tractor, making it a great feature for those who need to perform precise or frequent lifting and moving tasks.



Skid-Steer Quick-Attach System

[Table of Contents](#) / Skid-Steer Quick Attach

SSQA stands for Skid Steer Quick Attach — it's a universal attachment system used on compact tractors and skid steers that makes it super easy to swap out front-end implements like buckets, pallet forks, grapples, and snow pushers.

Why It's Awesome:

A SSQA loader lets you:

- Change attachments quickly, usually in under a minute
- Use attachments from different brands (as long as they're SSQA compatible)
- Save time and hassle—no tools needed

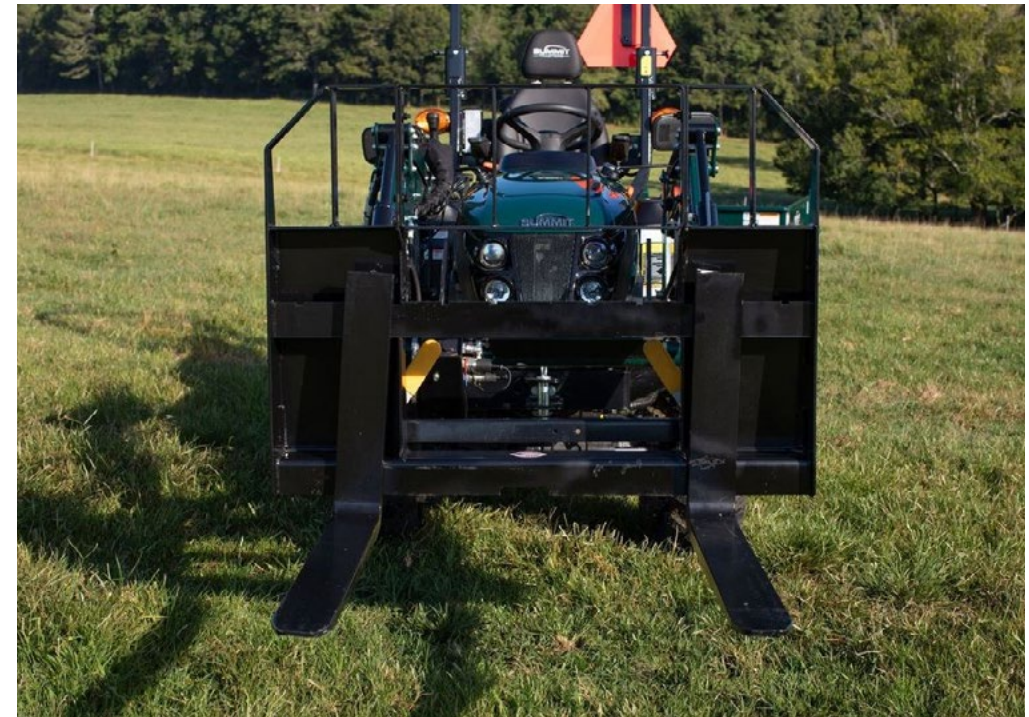
What It Looks Like:

The front of the loader has a universal mounting plate with two levers or handles. To change an attachment:

- Lower the loader
- Flip the levers to unlock
- Back away from the old attachment
- Drive into the new one
- Lock it in place by flipping the levers again

Common Implements That Work with SSQA:

- Buckets (general or 4-in-1)
- Pallet forks
- Snow blades or pushers
- Grapples
- Bale spears
- Brush cutters





Select a Feature Below to Learn More:

- | | |
|---|---|
| A – Independent Operator Seat | H – SMV Sign |
| B – SAE Type Controls | I – Made in USA |
| C – Dual Stabilizer Arms | Options: 8" & 16" Buckets |
| D – Locking Pin Storage Slots | Options: Street Pads |
| E – Operator Assist Step | |
| F – 12" Bucket Standard | |
| G – Mechanical Thumb Standard | |



Summit TX25H Tractor & BHX76 Backhoe Overview & Walkaround Video:

BHX76 BACKHOE

The U.S. made, Summit BHX76 Backhoe is a full subframe mounted unit, and comes standard with an independent operator seat, mechanical thumb, a 12" bucket, entry assist step, and locking pin keeping slots. Options include 8" and 16" buckets, and street pads. A backhoe increases a tractor's versatility, making it useful for construction, farming, and landscaping projects.



A backhoe on a tractor is used for digging, trenching, and excavating. It consists of a hydraulic-powered arm with a digging bucket attached to the rear of the tractor.

- Digging Trenches – For pipes, cables, or drainage systems
- Excavating – Removing soil for foundations, ponds, or landscaping
- Demolition – Breaking up concrete or small structures
- Material Handling – Lifting and moving heavy objects
- Stump Removal – Uprooting tree stumps and roots

Independent Operator Seat

An independent seat on a compact tractor backhoe refers to a separate, dedicated seat for operating the backhoe, usually mounted behind the main operator's seat.

Here's what that means in practical terms:

- Instead of swiveling the main tractor seat around to face the backhoe controls (which is common on some models), an independent seat is already positioned at the rear of the tractor, facing the backhoe.
- You get off the main seat, walk to the back, and sit in the independent backhoe seat to operate it.
- It usually comes with its own set of controls, armrests, and sometimes even a little platform for stability.

Advantages:

- Often more comfortable and ergonomically positioned for backhoe work.
- Can provide better visibility and control of the backhoe.
- No need to swivel or reconfigure the main seat.



Mechanical Thumb

A mechanical thumb on a compact tractor backhoe is an attachment that acts like a human thumb to help the backhoe grab, hold, and move objects more easily—like logs, rocks, brush, or debris.

Here's how it works:

- It's a metal arm with tines (usually curved), mounted to the dipper stick (the arm of the backhoe).
- When the bucket curls in, the thumb stays in a fixed position, so the bucket “pinches” against it—like your fingers closing against your thumb.
- It's mechanical, meaning you have to manually adjust its position using a pin system (unlike hydraulic thumbs, which are adjusted using hydraulic power from the tractor).

Why use it?

It gives your backhoe the ability to grip and lift irregular-shaped items that would otherwise slide out of just the bucket.



SAE controls on a compact tractor backhoe refer to a specific joystick layout used to operate the boom, dipper (stick), bucket, and swing functions of the backhoe.

What Are SAE Controls?

SAE stands for Society of Automotive Engineers, and in this context, it’s one of two common control patterns used on backhoes and excavators:

- SAE Pattern (also known as “Backhoe pattern”)
- The other common one is ISO Pattern (often used on excavators)

SAE Control Layout:

Left joystick:

- Push forward = Boom down
- Pull back = Boom up
- Left = Swing left
- Right = Swing right

Right joystick:

- Push forward = Dipper out
- Pull back = Dipper in
- Left = Bucket curl
- Right = Bucket dump

Why It Matters:

- Some machines let you switch between SAE and ISO, depending on your preference.
- If you learn on one pattern, it’s way easier to stay consistent across machines.
- SAE is popular in North America, especially for backhoe-style operation.

The Summit BHX76 Backhoe utilizes simple to use SAE Controls



Locking pin storage slots on a backhoe are designated holders or compartments built into the backhoe frame or boom where you safely store the locking pins when they're not in use.

What Are Locking Pins?

Locking pins are heavy-duty metal pins used to:

- Secure the backhoe boom during transport or storage
- Lock the stabilizer legs in the up or down position
- Sometimes even hold attachments or components in place

What the Storage Slots Do:

- Keep the pins organized and easy to find
- Prevent you from losing them in the field or shop
- Help you avoid damaging the pins or equipment by keeping them off the ground or out of the toolbox
- It's one of those small features that saves time and hassle, especially if you're moving between tasks or transporting your tractor often.



An entry assist step on a compact tractor backhoe is a built-in step or foot platform designed to help you climb safely and easily onto the operator station of the tractor or backhoe.

What It Does:

- Acts like a sturdy foothold to help you get on and off the machine—especially helpful if it's high off the ground.
- Often paired with a grab handle for added stability.

Where You'll Find It:

- Near the operator platform on the side of the tractor

Why It's Useful:

- Improves safety – reduces slips and falls
- Adds convenience – especially when carrying tools or climbing in and out frequently
- Great for smaller operators or uneven terrain

It's one of those little features that makes a big difference in comfort and ease of use.



An SMV sign on a compact tractor or tractor backhoe stands for Slow Moving Vehicle sign.

What It Is:

- It's a bright orange triangle with a red reflective border, mounted on the back of the tractor or backhoe.
- Designed to warn other drivers that your vehicle moves at 25 mph (40 km/h) or less.

Why It Matters:

- Safety – Makes your machine highly visible on roads, especially at dawn, dusk, or in low light.
- Legal Requirement – In many places, it's required by law for farm equipment or any slow-moving vehicle traveling on public roads.

Where It's Located:

- Usually mounted on the rear of the tractor or backhoe attachment.
- Can often be removed or folded down when not on public roads.

So basically, the SMV sign is your tractor's "caution" light—a heads-up to everyone behind you that you're cruising slow and steady.



Standard 12” Backhoe Bucket

A 12” bucket on a compact tractor backhoe is a great all-purpose size for precise digging and trenching, especially when working in tight spots.

What It’s Good For:

- **Trenching** – Perfect for digging narrow trenches for:
 - Water lines
 - Electrical conduit
 - Irrigation systems
- **Planting** – Digging holes for small trees, shrubs, or fence posts
- **Tight spaces** – Ideal when you need to work around obstacles or don’t want to disturb a lot of soil
- **Digging in tough ground** – Smaller buckets put more force per inch, so they cut through hard or compacted soil better than wider buckets

Why Choose 12” Over Larger Buckets?

- Lighter and easier on the machine
- Less strain on your backhoe hydraulics
- Cleaner, more precise trenches

So, if you’re doing utility work, landscaping, or projects that require clean, narrow digs, a 12” bucket is a go-to size. Want to compare it to other bucket sizes for a specific task?



An 8" backhoe bucket is a narrow digging bucket typically used for:

1. Trenching for Utilities

- Perfect for digging narrow trenches for water lines, electrical conduit, irrigation pipes, or drain tile.
- Keeps the trench tight and clean, which reduces backfill and labor.

2. Root or Stump Work

- Great for digging around roots or stumps when you want more precision and less soil disturbance.
- The narrow width helps pry out smaller stumps or cut through root systems.

3. Tight Access Jobs

- Useful in areas where space is limited and a wider bucket wouldn't fit.
- Helpful for precise digging near structures, fences, or landscaping.

Summary:

- Add an 8" optional bucket for precision work or super narrow trenches.
- 12" Standard on Summit BHX76 Backhoes - good all-around size
- Add a 16" optional bucket if you want a wider dig and move more material. Productivity depends upon a number of factors including soil compaction level & consistency



Optional Street Pads

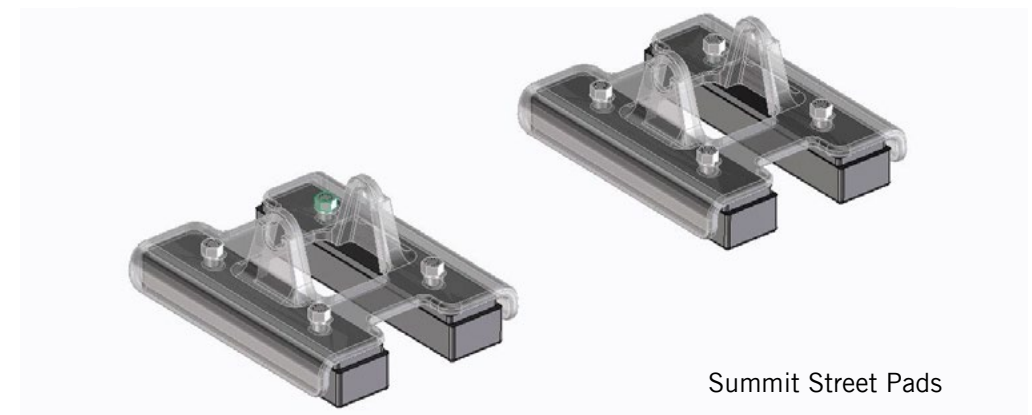
Street pads on a compact tractor backhoe are special covers or attachments for the stabilizer legs (outriggers) that are designed to protect hard surfaces like pavement, concrete, or asphalt.

What they do:

- When you drop the backhoe's stabilizers to dig, they put a lot of pressure on the ground.
- Without street pads, the stabilizer feet (which are often steel and have a claw or serrated edge) can dig into or damage paved surfaces.
- Street pads are typically made of rubber or polyurethane and attach to the stabilizer feet to distribute the pressure and prevent scratching, gouging, or cracking the surface.

When to use them:

- Working on driveways, sidewalks, roads, or parking lots.
- Jobs where the customer or city requires surface protection.
- Anytime you don't want to leave marks or damage behind.



Summit Street Pads

ATTACHMENTS AND IMPLEMENTS

WHATEVER THE JOB WE HAVE AN ATTACHMENT OR IMPLEMENT FOR THAT

FRONT MOUNT ATTACHMENTS

- [GX54 GRAPPLE](#)
- [PFX36 PALLET FORKS](#)

PTO DRIVEN 3-POINT IMPLEMENTS

- [RRCX48 ROTARY CUTTER](#)
- [FMX60 FINISH MOWER](#)
- [RTLX54 ROTARY TILLER](#)
- [PHDX POST HOLE DIGGER](#)
- [SSX500 SEEDER/SPREADER](#)

OTHER 3-POINT IMPLEMENTS

- [AFDHX60 ANGLE FRAME DISC HARROW](#)
- [BBX60 BOX BLADE](#)
- [BPX60 BOXPLANE](#)
- [DBX1 DISC BEDDER](#)
- [LPX60 LAND PLANE - LAND GRADER](#)
- [LRX60 LANDSCAPE RAKE](#)
- [MBX1 MIDDLE BUSTER](#)
- [RBX60 REAR BLADE](#)
- [TMX1 TRAILER MOVER](#)

DRAWBAR PULLED IMPLEMENTS

- [DTX1.5 DUMP TRAILER](#)



READY TO GO TO WORK™



SUMMIT BRAND ATTACHMENTS AND IMPLEMENTS

You can purchase a full line of Summit Brand tractor attachments & implements to help you handle just about any project around the homesite, farm or job site. We explain what each attachment or implement does, and provide key features to help you select the right tools for the job.

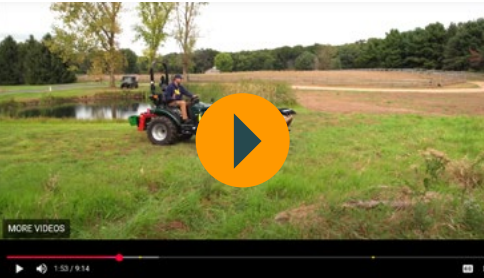
We've grouped the attachments & implements into four categories.

- Skid-Steer Quick Attach Mounted Attachments
- PTO-Driven 3-Point Implements
- Other 3-Point Implements
- Drawbar Pulled Implements



GX54 GRAPPLE

The Summit GX series grapples are perfect for picking up and moving a wide range of material from Point A to Point B; from heavy brush, logs, rocks & boulders to a wide range of organic and man-made objects. There is virtually no limit to the kind of work they do and no tractor is complete without one.



See the GX54 Grapple being put to work in this video:

The Summit GX Series Grapples feature dual hydraulic cylinders, protected sleeve hydraulic hoses, gusseted teeth, laminated and serrated tines, powder coat finish and greaseable pins.

- Move Brush, Logs, Deadfall
- Clamshell Lid Captures More Material
- Dual Hydraulic Cylinders
- Serrated Tines to Cut Through Tree Roots
- Heavy Duty Grade A50 Steel
- Light Weight - Only 255 lbs Preserves Loader Lift Capacity
- Skid Steer Quick Attach Loader Compatible
- Made in the USA



A grapple on a tractor is used for grabbing, lifting, and moving bulky or irregularly shaped materials that are difficult to handle with a standard bucket. It consists of hydraulic-powered jaws or tines that clamp down on objects.

Common Uses:

- Handling Logs & Brush – Picking up tree limbs, logs, and brush
- Debris Cleanup – Removing storm debris, rocks, and waste
- Land Clearing – Grabbing and moving roots, stumps, and vegetation
- Scrap & Material Handling – Managing metal, concrete, or construction debris

Grapples make a tractor much more efficient for heavy-duty tasks, especially in forestry, farming, and land management.



Pallet forks are a tractor attachment used for lifting, moving, and transporting heavy loads such as pallets, logs, hay bales, and other bulky materials. They typically mount to the front-end loader or 3-point hitch and function like a forklift.

Primary Uses of Pallet Forks on a Tractor:

- **Moving Pallets** – Ideal for lifting and transporting palletized materials like feed, fertilizer, and supplies.
- **Handling Hay Bales** – Used for lifting and stacking round or square hay bales.
- **Transporting Logs & Lumber** – Useful for moving cut timber, firewood, or fence posts.
- **Lifting Equipment & Supplies** – Helps load or unload heavy items such as generators, barrels, and construction materials.
- **Clearing Brush & Debris** – Can be used to pick up and move large piles of brush, debris, or scrap materials.
- **Handling Stones & Rocks** – Assists in moving heavy stones for landscaping or construction projects.

Pallet forks are an extremely versatile tool, turning a tractor into a makeshift forklift, making material handling much more efficient on farms, construction sites, and homesteads.



PFX36 SSQA PALLET FORKS

SUMMIT TRACTORS Skid Steer Quick Attach Pallet Forks features a removeable walk-through frame. The Summit Tractor fork has (2) 36” Class II adjustable forks with a total capacity of (1) Ton (2,000 lbs.). Pallet forks are an essential attachment for any construction, agricultural, or material handling operation.



Their two sturdy, fork-like arms mounted on a frame that attaches to a skid steer loader, provides a versatile and reliable means of transporting heavy and bulky loads. These forks excel in tasks like moving pallets, lumber, construction materials, or even large, unwieldy objects.

- Skid Steer Quick Attach (SSQA) Mount
- Grade 50 High Tensile Steel
- Forks: 36” Class IIA
- Load Capacity 1 (Ton) (2,000 lbs,)
- Move material pallets with ease
- Used With the Summit LX85 Self-Leveling Loader – Keeps Load Level When Raising or Lowering
- Fully Adjustable Working Width Forks



Pallet Forks Specifications:

WEIGHT: 292 LBS
HEIGHT: 37 IN
WIDTH: 46.5 IN
LENGTH: 44 IN



RCX48 ROTARY CUTTER

The Summit Tractors RCX48 Rotary Cutter plays a vital role in land management operations. This powerful tool is designed to tackle thick, dense vegetation and overgrown areas with efficiency and precision. Featuring a spinning horizontal blade, rotary cutters can effortlessly slice through tall grasses, shrubs, and even small trees. This makes them indispensable for tasks such as clearing pastures, maintaining trails, and reclaiming overgrown areas.



See the RCX48 Rotary Cutter being put to work in this video:



- Rugged steel side rails
- One-piece top deck
- Cast iron gearbox
- Stump jumper
- Twin tail wheels
- Shielded PTO with shear pin
- Working width 48"
- Cutting capacity up to 1" diameter
- Blade size 1/2" x 3"
- Deck thickness 12 gauge
- One-year warranty
- Made in USA



What is a rotary cutter (aka bush hog, brush hog) used for on a compact tractor?

A rotary cutter on a tractor is used for cutting and clearing overgrown vegetation, such as tall grass, weeds, brush, and small saplings. It is a heavy-duty mowing attachment designed for rough terrain and unmanaged areas. Common uses include:

- Pasture and Field Maintenance – Keeps fields, meadows, and pastures clear of overgrowth.
- Brush and Weed Control – Cuts down thick weeds, briars, and small trees.
- Land Clearing – Helps clear trails, roadsides, and fence lines.
- Fire Prevention – Reduces fuel buildup by mowing overgrown areas.
- Wildlife Habitat Management – Creates open spaces for wildlife by controlling excessive vegetation.

Rotary cutters attach to the tractor's three-point hitch and are powered by the PTO (Power Take-Off). They feature heavy-duty blades that swing to absorb impacts from rocks or stumps, making them ideal for rough and uneven terrain.



What is a 3-point finish mower used for on a compact tractor?

A 3-point finish mower is a tractor-mounted mower used for cutting grass and creating a smooth, manicured lawn-like finish. It attaches to the tractor's 3-point hitch and is powered by the PTO (Power Take-Off).

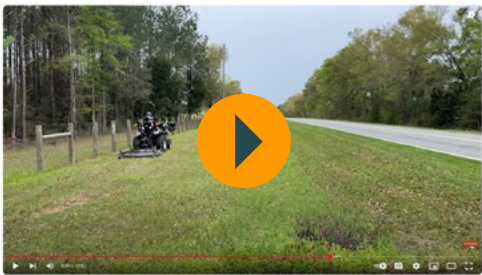
Common Uses:

- Lawn Maintenance – Mowing large grassy areas efficiently
- Golf Courses & Parks – Creating an even, professional cut
- Sports Fields & Estates – Maintaining well-groomed turf
- Light Pasture & Field Mowing – Keeping grass trimmed for aesthetics and health
- Finish mowers typically have rear discharge or side discharge options and provide a finer cut than rotary cutters or bush hogs, making them ideal for well-maintained properties.



FMX60 FINISH MOWER

The grass will look better on your side of the fence when you cut it with Summit FMX60 Finish Mower. Mowing has never been easier because of the free-floating flex hitch system. Uneven terrain? The free-floating flex hitch system follows the contour of the ground giving you a rich, smooth, manicured look. They are designed with a 3/16" thick steel reinforced deck, 3 cast iron blade spindles with ball bearings, 1/4" thick heat-treated blades and a 40 hp cast iron gearbox.



See the Summit FMX60 Finish Mower being put to work here:

- Free floating flex hitch system
- Heavy duty fully baffled steel deck
- Heavy-duty cast iron gearbox
- Height adjustment 1" to 4 ½"
- Tubular wheel arms
- Shielded PTO shaft with shear pin
- Single belt for simple adjustment
- Anti-scalp front roller
- Rubber rear discharge deflector shield
- Cutting width 60"
- Made in USA
- One-year warranty



RTLX54 Rotary Tiller

[Table of Contents](#) / RTLX54 Rotary Tiller

RTLX54 ROTARY TILLER

The Summit TLRX54 Rotary Tiller has all the quality features of the full-size tillers. The heavy-duty frame and 6 tines per flange produce a better seedbed. They provide a uniform mixture throughout cultivated depth and produce loose textured soil that holds moisture and reduces erosion.



- All gear-driven
- Slip clutch drive line
- Six tines per flange
- Adjustable skid shoes
- Cast iron center gearbox
- Standard parking stand
- Working width 54"
- One-year warranty



What is a rotary tiller used for on a compact tractor?

A rotary tiller on a tractor is used for soil preparation by breaking up, aerating, and mixing the soil. It is commonly used in agriculture, gardening, and landscaping for the following purposes:

Tilling and Loosening Soil – Breaks up compacted soil to improve drainage and aeration.

Seedbed Preparation – Creates a fine, even soil texture ideal for planting crops, grass, or gardens.

Weed and Residue Management – Buries weeds and leftover crop residues to prevent regrowth.

Mixing Soil Amendments – Incorporates compost, manure, lime, or fertilizer into the soil for better nutrient distribution.

Leveling and Smoothing Land – Helps even out rough terrain before planting or laying sod.

Rotary tillers are often attached to the tractor's three-point hitch and powered by the PTO (Power Take-Off) to rotate the blades and effectively break up the soil.



What is a post hole digger used for on a tractor?

A post hole digger is a tractor attachment used for drilling deep, uniform holes in the ground for setting posts, planting trees, or installing fencing. It typically consists of a hydraulic or PTO-powered auger with a spiral drill bit that efficiently digs into the soil.

Primary Uses of a Post Hole Digger:

Installing Fence Posts – Quickly digs holes for fence installation on farms, ranches, or properties.

Setting Poles – Used for placing utility poles, signposts, or deck supports.

Planting Trees & Shrubs – Makes deep holes for planting large trees or bushes.

Digging for Footings – Helps in foundation work for small buildings, pole barns, and outdoor structures.

Creating Drainage Holes – Can be used to dig holes for drainage or aeration purposes in certain applications.

A tractor-powered post hole digger is much faster and easier than manual digging, especially for large-scale projects. Auger sizes vary (typically 6” to 24” in diameter) to match different post or planting needs.

Auger Sizes	Length	Width	Height	Weight
Posthole Digger Auger - 6”	44”	6”	6”	32 LBS
Posthole Digger Auger - 9”	44”	9”	9”	43 LBS
Posthole Digger Auger - 12”	44”	12”	12”	55 LBS

PHDX POST HOLE DIGGER

Summit PHDX Post Hole Diggers are the latest in post hole digger innovation from King Kutter. The post hole digger features a 3-point Cat. I Hitch, a unique Quick-Tach™ threaded auger, a slip clutch driven gearbox and 6”, 9” or 12” augers with “Butterfly Flighting”. They feature a heavy duty, square tube formed frame and are designed and built for safety, with the farmer, contractor, and the landscaper in mind.



Its construction features two elongated handles attached to a set of pointed metal blades. This allows for efficient and precise digging, making it ideal for tasks such as installing fence posts, signposts, or any other structure that requires secure anchoring.



- Square tube formed frame
- Safety shield integrated into structure
- Quick Tach™ threaded auger
- Slip clutch
- 6”, 9” 12” augers available
- Cat 1 3-point
- One-year warranty



SSX500 SEEDER/SPREADER

Seeder spreaders are available in PTO-driven, pull-behind, and 3-point hitch models, with adjustable spread rates and widths for different applications. They save time and labor compared to manual spreading, ensuring even coverage and efficient material use.

The Summit SSX500 Seeder/Spreaders is a great choice for all your spreading needs.



SUMMIT TRACTORS SEEDERS/SPREADERS can spread seed, granular fertilizer, crystalline herbicides, pesticides and sand. Plus, you can choose from three different spreading patterns; predominately left, predominately right or left and right. The seamless all steel seeder/spreader is strong enough to endure rough handling and heavy use.

- Rear PTO driven
- Seamless conical polyethylene hopper
- Adjustable spread rate
- Multiple spread patterns
- Wind drift shield
- Tubular steel frame
- Greaseable gearbox
- Shielded PTO shaft
- Height 45" Width 46" Length 46"
- Weight 122 lbs.



What is a Seeder/Spreader used for?

A seeder spreader, also known as a broadcast spreader, is a tractor attachment used for evenly distributing seeds, fertilizer, lime, or other granular materials over a large area. It typically operates using PTO power or gravity-fed mechanisms to spread materials efficiently.

Primary Uses of a Seeder Spreader:

Planting Grass & Cover Crops – Spreads grass seed, clover, rye, or other crops over fields, pastures, or lawns.

Fertilizing Fields & Lawns – Evenly applies granular fertilizers to promote healthy crop or lawn growth.

Spreading Lime or Soil Amendments – Distributes lime to neutralize soil acidity and improve fertility.

Applying Salt or Ice Melt – Helps de-ice roads, driveways, and walkways in winter conditions.

Overseeding & Pasture Maintenance – Restores thin or damaged grassy areas by spreading new seed.



AFDHX60 Angle Frame Disc Harrow

An angle-framed disc harrow is an agricultural implement attached to a tractor, used primarily for soil preparation. It consists of a sturdy, angled metal frame supporting multiple rows of concave metal discs that cut into the soil. Here’s what it’s used for:

- **Breaking Up Soil** – It helps break up clumps of soil, making it finer and easier to work with.
- **Tilling the Land** – Used for primary or secondary tillage to prepare the seedbed for planting.
- **Weed Control** – It uproots weeds and incorporates them into the soil, reducing competition for crops.
- **Mixing Crop Residue** – It helps blend leftover plant material into the soil, aiding decomposition and soil fertility.
- **Leveling the Ground** – Helps create a smoother surface for planting and irrigation.

The angle frame design allows for adjustable disc angles, which can be set to different depths and aggressiveness depending on soil conditions. It’s a versatile tool widely used in farming for preparing fields before seeding.



AFDHX60 ANGLE FRAME DISC HARROW

The Summit Tractors AFDHX60 Angle Frame Disc Harrow is designed for soil preparation and seedbed cultivation. Its distinctive structure, characterized by a series of concave cutting discs mounted on a sturdy frame, allows it to efficiently break up and level soil. The adjustable angle feature provides versatility in controlling the aggressiveness of the tillage, making it suitable for a wide range of soil types and conditions. This tool plays a pivotal role in preparing fields for planting, effectively incorporating organic matter and nutrients into the soil, and creating a receptive surface for seeds. By promoting optimal seed-to-soil contact, an angle frame disc harrow significantly enhances germination rates and overall crop yields.

(NOTE: Not guaranteed to be compatible with Quick Hitch attachments)

- Heavy duty angle iron frame
- Sealed ball bearings
- Notched disc blades
- Weight 425 lbs.
- Height 40” Width 60” Length 46”
- Working Width 60”
- Made in USA
- One-year warranty



The heavy angle frame and front and rear notched discs blades produce a better seedbed. This disc is equipped with sealed bearings and adjustable axle angle settings. It’s a field ready disc harrow that’s built to last.



BBX60 BOX BLADE

The Summit Tractors BBX60 Box Blade stands as an indispensable tool in the toolkit of any land management equipment lineup. Its design, characterized by a sturdy, rectangular frame fitted with adjustable teeth and a leveling blade, grants it a multifaceted utility that few other implements can match. The box blade's primary function is to level and shape uneven terrain, making it instrumental in tasks such as grading roads, preparing fields, and maintaining driveways. Its versatility extends further as it can also be used for tasks like spreading gravel, removing debris, and even scarifying the soil for improved aeration. The adjustable teeth allow for fine-tuning the depth and aggressiveness of the blade, providing unparalleled control and precision in a wide array of applications. With its robust construction and adaptability, the box blade proves its worth time and time again, making it an invaluable tool for anyone involved in land management and agriculture.

(NOTE: Not guaranteed to be compatible with Quick Hitch attachments)

- Replaceable rippers
- Formed self-cleaning moldboard
- Replaceable cutting edges, front and rear
- 4 x 4 box shank housing
- Clevis type lower hitch brackets
- Weight 441 lbs.
- Height 35" Working Width 60" Length 29"
- One-year warranty



What is a Box Blade used for?

A box blade (sometimes called a box scraper) is a tractor attachment used for leveling, grading, and smoothing surfaces. It consists of a metal box with front and rear cutting blades, often with adjustable scarifiers (ripping teeth) for breaking up tough ground.

Common Uses:

Grading driveways & roads – Spreading and leveling gravel or dirt

Land leveling – Preparing areas for construction or planting

Soil smoothing – Breaking up clumps and evening out terrain

Ditching & drainage – Creating slight slopes for water runoff

Spreading material – Distributing soil, sand, or gravel evenly

A box blade is an essential tool for maintaining gravel roads, landscaping, and general land management.



BPX60 BOXPLANE



- Four scarifier shanks
- Shank adjustments: 3
- Adjustable rear gate to change from operating mode
- Formed self-cleaning moldboard
- Replaceable cutting edges, front, rear middle
- Weight 500 lbs.



See the BPX60 Boxplane being put to work in this video:

What is a BoxPlane™ used for?

A BoxPlane™ is an innovative new tractor attachment that is actually two implements in one; a Box Blade (aka Box Scraper) and a Land Plane (aka Land Grader), hence the name BoxPlane™. Utilizing a patent pending rear gate system, a BoxPlane™ eliminates the need to have two implements to do the same project. It settles the longstanding debate; which is better for road maintenance, a Box Blade for a Land Plane?

Common Uses:

Grading driveways & roads – Spreading and leveling gravel or dirt

Land leveling – Preparing areas for construction or planting

Soil smoothing – Breaking up clumps and evening out terrain

Ditching & drainage – Creating slight slopes for water runoff

Spreading material – Distributing soil, sand, or gravel evenly

A BoxPlane™ is an essential tool for maintaining gravel roads, landscaping, and general land management.

NOTE: Not guaranteed to be compatible with Quick Hitch attachments





DBX1 DISC BEDDER

The DBX1 Disc Bedder demonstrates the latest in product design. This Disc Bedder features a Cat. I, quick hitchable, 3-point hitch. Our design allows adjustment of discs to virtually any row width up to 48". The 48" square tube toolbar allows the bedder shanks to slide for widening or narrowing the bed. The Summit DBX1 Disc Bedder is ideal for home gardeners, vegetable growers and farmers.

(NOTE: Not guaranteed to be compatible with Quick Hitch attachments)



See the DBX1 Disc Bedder being put to work in this video:



- Category I 3-point hitch compatible
- 48" square tube toolbar
- Max depth 7"
- 2 blades
- Working width 48"
- Sealed bearings
- One-year warranty



What is a Disc Bedder used for?

A disc bedder (also called a row bedder or hiller) is an attachment for a compact tractor used primarily in gardening, farming, or landscaping to form raised rows or beds in soil.

What It's Used For:

- Creating raised planting beds for crops like:
 - Vegetables (e.g., potatoes, corn, beans)
 - Flowers or nursery plants
- Improving drainage by raising soil above ground level
- Warming soil faster in spring for earlier planting
- Channeling water for irrigation between rows

How It Works:

- The disc bedder uses angled discs to pull soil inward, forming a raised mound (or "bed").
- It's pulled behind the tractor via the 3-point hitch.
- The disc spacing and angle can usually be adjusted to match your row width and depth needs.

Why Use One on a Compact Tractor?

- Compact tractors are ideal for small to medium plots, and a disc bedder helps you prep rows quickly and evenly without needing large equipment.
- Perfect for market gardens, food plots, or hobby farms.

So in short, a disc bedder helps you prep perfect planting rows with less manual labor and more uniform results.

What is a land plane used for?

A land plane is a tractor attachment used for leveling and smoothing soil or gravel surfaces. It consists of a long, heavy-duty frame with angled blades that scrape, redistribute, and smooth out uneven terrain. Here’s what it’s typically used for:

1. **Leveling Driveways & Roads** – Ideal for maintaining gravel roads by filling in potholes and redistributing material evenly.
2. **Smoothing Fields & Pastures** – Helps create a uniform surface for planting or grazing.
3. **Grading Construction Sites** – Used to prepare a site for building by leveling out high spots and filling in low spots.
4. **Improving Water Drainage** – Helps prevent standing water by ensuring a consistent, even grade.
5. **Maintaining Arenas & Tracks** – Used for leveling horse riding arenas, sports fields, or other dirt-based surfaces.



LPX60 LAND PLANE - LAND GRADER

Summit LPX60 Land Graders are the perfect tool for driveway and gravel road maintenance and construction. They work to fill potholes and low spots and redistribute material to achieve the perfect roadway surface. The Cat. 1, 3-pt. quick hitch compatible hitch makes it easy to hook up and get working fast.



Unlike a box blade, a land plane doesn’t carry material; instead, it continuously redistributes it as the tractor moves. This makes it excellent for regular maintenance work on dirt and gravel surfaces.

- Two reversible cutting edges
- ½” thick replaceable wear pads
- Flat steel, angle and tube frame
- Made in USA
- One-year warranty

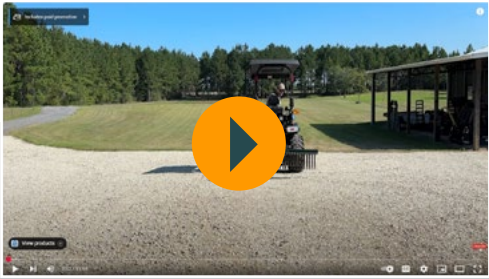




LRX60 LANDSCAPE RAKE

The Summit LRX60 Landscape Rake is engineered for versatility for the landscaper or homeowner. They are great for gravel road grading, lot maintenance, seed bed preparation, the removal of rocks, roots, trash, plus much more. These yard rakes are equipped with 5 forward and 5 reverse settings for maximum flexibility and maneuverability. The unique design features an adjustable stabilizer bar that allows the heat-treated spring steel tines to be more or less rigid, and a reinforced, 3-point, square tube frame for added strength.

See the LRX60 Landscape Rake being put to work in this video:



- Reinforced square tubular frame with gussets
- 5 forward and reverse settings
- Individually mounted heat-treated spring steel tines
- Width 60"
- Number of teeth 30
- 1" spacing between tines
- Made in USA
- One-year warranty

What is a landscape rake used for?

A landscape rake, also known as a rock rake or yard rake, is a tractor attachment used for clearing, leveling, and preparing soil. It consists of a long row of curved tines that drag along the ground, gathering debris while allowing finer soil to pass through. Here are its primary uses:

1. **Removing Debris** – Collects rocks, sticks, roots, and other unwanted materials from fields, lawns, or driveways.
2. **Leveling & Grading** – Helps smooth out rough terrain, making it ideal for seedbed preparation.
3. **Spreading Material** – Distributes gravel, mulch, or topsoil evenly across an area.
4. **Dethatching Lawns** – Removes excess thatch (dead grass and organic matter) to improve lawn health.
5. **Preparing Trails & Paths** – Clears and levels dirt paths for better access.

Landscape rakes are great for final soil preparation before seeding or laying sod, ensuring a smooth and clean surface. Many models can be angled to push debris to one side for easier collection.



MBX1 MIDDLE BUSTER

The Summit MBX1 Middle Buster is great for making rows in a garden, making a trench, digging potatoes, and many other things. The heavy-duty steel shank and frame make this tool extremely durable. The Middle Buster is quick hitch compatible and fits most Cat. 1 quick hitch systems.



- Heavy duty steel frame
- Solid steel shank
- 14" heat treated furrower
- Height 42" Width 26" length 17"
- Weight 90 lbs.

What is a Middle Buster used for?

A middle buster is a tractor attachment used primarily for breaking ground, digging furrows, and harvesting root crops. It features a V-shaped, double-winged plow mounted on a sturdy shank, designed to cut through the soil efficiently. Here are its main uses:

1. **Creating Furrows** – Ideal for making planting rows for crops like potatoes, corn, and beans.
2. **Harvesting Root Crops** – Lifts and loosens soil around potatoes, peanuts, carrots, and other underground crops for easier collection.
3. **Breaking Up Hard Soil** – Works well for initial tillage in compacted or uncultivated ground.
4. **Digging Trenches** – Can be used to create shallow trenches for irrigation or drainage.
5. **Garden & Food Plot Preparation** – Helps prepare small-scale plots for planting by creating deep, well-defined rows.

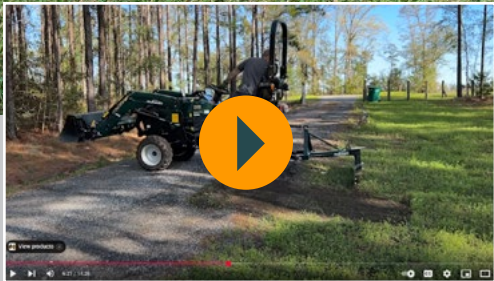
A middle buster is similar to a subsoiler but is more commonly used for creating furrows rather than deep soil aeration. It's a simple yet versatile tool that's popular among gardeners and small-scale farmers.





RBX60 REAR BLADE

The Summit RBX60 Rear Blade is designed for added value performance. Uses include road grading and maintenance, landscaping, snow removal, cleaning livestock pens, and much more. The Summit rear blades feature a special formed 10" high ¼" thick moldboard designed to roll dirt or snow and prevent drag. Each moldboard is equipped with a high carbon steel reversible cutting edge that adds to the life of the blade. It features a unique, reinforced, 3-point square tube frame for added strength. Each unit has 5 forward and 5 reverse settings for maximum efficiency.



See the RBX60 Rear Blade being put to work in this video:

- Reinforced square tubular frame with gussets
- High carbon steel reversible cutting edge
- 5 forward and 5 reverse settings
- Specially formed moldboard
- Height 36" Width 60" Length 40"
- Weight 191 lbs
- Made in USA
- One-year warranty



What is a Rear Blade used for on a tractor?

A rear blade is a versatile tractor attachment used for grading, leveling, spreading, and clearing materials. It mounts to the 3-point hitch and can often be angled or reversed for different tasks.

Primary Uses of a Rear Blade:

1. **Grading & Leveling Roads** – Smooths out gravel driveways, dirt paths, and construction sites.
2. **Spreading Material** – Distributes gravel, sand, or topsoil evenly.
3. **Snow Removal** – Clears snow from driveways, roads, and parking areas.
4. **Ditch & Water Drainage Maintenance** – Helps shape and maintain ditches for better water flow.
5. **Landscaping & Field Preparation** – Levels ground for seeding, sod installation, or pasture maintenance.

Many rear blades have adjustable angles and tilt, allowing for precise control over material movement. They're especially useful for maintaining gravel roads and controlling erosion on farms or properties.



What is a Trailer Mover used for on a compact tractor?

A trailer mover, also known as a trailer spotter or hitch mover, is a tractor attachment designed to easily move trailers, wagons, and other towable equipment around a farm, yard, or worksite. It typically mounts to the 3-point hitch or quick hitch of a tractor and includes a ball hitch or pintle hitch for connecting to various trailer types.

Primary Uses of a Trailer Mover:

- 1. Moving Utility & Equipment Trailers** – Easily repositions trailers without needing a truck.
- 2. Maneuvering in Tight Spaces** – Allows for precise trailer movement in barns, sheds, or storage areas.
- 3. Transporting Hay & Feed Wagons** – Quick attachment for moving livestock feed trailers.
- 4. Positioning Boat, RV, or Camper Trailers** – Handy for moving non-agricultural trailers in tight yards or driveways.
- 5. Shifting Grain Carts & Implements** – Helps relocate farm equipment trailers efficiently.

This attachment is a time-saver for farmers and property owners, making it much easier to hook up and move trailers without the hassle of using a large truck.

TMX1 TRAILER MOVER

The Summit TMX1 Trailer Mover enables your tractor to tow many types of trailers that are usually towed by a pickup. It will receive the towing inserts you have with your truck's hitch. Unique safety chain. 2" Square Tube Receiver Hitch.



- 2 5/16" welded ball
- Safety chain
- 2" square tube receiver hitch
- Height 24" Width 32" Length 15"
- Weight 76 lbs.



DTX1.5 DUMP TRAILER

The Summit DTX1.5 Dump Trailer is the most versatile dump wagon on the market. Whether hauling materials, choring, gardening, or carrying your deer stand to the woods, the Summit DTX1.5 Dump Trailer is as tough as they come.



See the DTX1.5 Dump Trailer being put to work in this video:



- Rear dump design
- Two-way opening rear gate
- Double action pump
- Walking beam tandem axle
- Manual raise/lower or use tractor rear hydraulics to operate from tractor seat
- Load capacity 3,000 lbs.
- Height 34" Width 54" Length 109"
- Weight 1,050 lbs.

What is a Dump Trailer used for on a compact tractor?

A dump trailer attached to a tractor is used for hauling and unloading bulk materials in farming, construction, and landscaping. It features a hydraulic system that tilts the trailer bed, making it easy to unload materials quickly. Here are its primary uses:

1. **Transporting Soil & Gravel** – Used for moving dirt, sand, gravel, and other loose materials.
2. **Hauling Crops** – Farmers use dump trailers to carry harvested crops like grain, potatoes, or silage.
3. **Moving Manure & Compost** – Efficiently transports organic material for soil enrichment.
4. **Clearing Debris** – Helps in farm or land maintenance by removing brush, rocks, or construction debris.
5. **Carrying Firewood or Bales** – Can be used to transport logs, hay bales, or other heavy loads.

The hydraulic dumping mechanism makes unloading quick and efficient, reducing manual labor. Dump trailers come in various sizes and configurations, including single-axle, dual-axle, and tandem models, depending on the tractor's capacity and the job requirements.





Summit Tractors brand compact tractor equipment can be purchased from any of our tractor stocking locations.

You can find a location nearest you here:



ALL LOCATIONS

COMING SOON: If you don't have a Summit Tractors stocking retailer near you, we have other great options.

Soon you will be able to place an order at any of our retailer's store locations, or from their websites. Each of these options includes free shipping to the store location nearest you, or home/farm/jobsite delivery to anywhere in the 48 contiguous U.S. states for a low flat fee of \$500. With a tractor in the order, that includes the tractor, and an unlimited number of tractor attachments & implements



COMING SOON



COMING SOON

For more information, visit our website





Financing Available

[LEARN MORE](#)



Want to finance your Summit Tractors brand equipment? Each Summit Tractors retailer as partnered with industry leading financial services companies to offer no down payment financing for up to 84 months. This option makes the equipment affordable through low monthly payments. You may even include tractor attachments & implements when you finance them with a tractor.

Click the “Learn More” button above for more information.

If you have any questions at all, please contact Summit tractors by calling or texting 770-209-3390, emailing Summit at support@summittractors.com or completing a simple web form by clicking the image below:

Contact Summit Tractors



SUMMIT[®] TRACTORS READY TO GO TO WORK[™]

CONTACT SUMMIT TRACTORS
CALL OR TEXT 770-209-3390
Email: support@summittractors.com
SUMMITTRACTORS.COM

